

Torrent d'Estadella, Barcelona

08030, Barcelona

Torrent d'Estadella is an industrial area located in the district of Sant Andreu, in the north-eastern part of the city of Barcelona, Catalonia, Spain.

The project area is rectangular in shape, as it was previously used as agricultural land. It is strategically located and seamlessly connected to Barcelona city-centre and surrounding towns.

The area is close to the Besós River, and two important railway lines. One of them, La Sagrera - Sant Andreu, is recently covered, creating walking areas on the top. However, these differing levels have created a discontinuous public space.

This area is currently being transformed, and has potential to be a new urban hub, due to its proximity to the future La Sagrera high speed

rail station, the new Camí Comtal and Besòs River linear parks of and the Mercedes site. The project area does not include any heritage elements. However, existing factories have potential to be renovated and repurposed.

In the surrounding area, there is a great diversity of urban typologies, including, new housing, developments, industrial areas, the historic centre of Sant Andreu and important infrastructure, such as the Fabra i Coats enclosure.

Proposals should seek to preserve industrial activity, whilst seeking new uses for the empty or inactive warehouses to generate additional commercial activity. The City aims to modernise the existing infrastructure and create a sustainable and energy-efficient environment for all users, such as, permanent residents, daily workers and visitors.



Figure 1: Orthophoto Torrent de l'Estadella Source: Barcelona City Council

Approx. site area:

Study Site: 80,5 ha. approx. (Yellow)
Intervention Site: 29,0 ha. approx. (Red)

Key Information:

Population of Bon Pastor: 12,594
Population of Sant Andreu: 148,232
Population of Barcelona: 1.620,343
Empty industrial warehouses: 9
Inactive industrial warehouses: 27
Total industrial warehouses opportunity: 36
Primary sectors: Metal products and Recycling and waste.

Priority areas & main expectations:

The project should develop strategies that focus on the following areas:

- Regenerating the site's industrial fabric by repurposing empty warehouses.
- Improving connections between the site and its surroundings.
- Boosting the number of recreational greens accessible to both residents and workers.
- Integrating accessible sustainable mobility options.
- Increasing buildings' energy efficiency and renewable energy sources.

Presentation of the site and development expectations

The area of Torrent de l'Estadella has an agricultural past that has influenced its current industrial present. This is evident in both its physical layout, streets, axes, and geometry of the plots, as well as its connections to the Besos River and the Rec Comtal. Torrent de l'Estrella is the backbone of the industrial estate. The street still has some of the natural elements that serve as a reminder of its past. This is a valuable space that must recover its once important value, and contribute to the character of the estate.

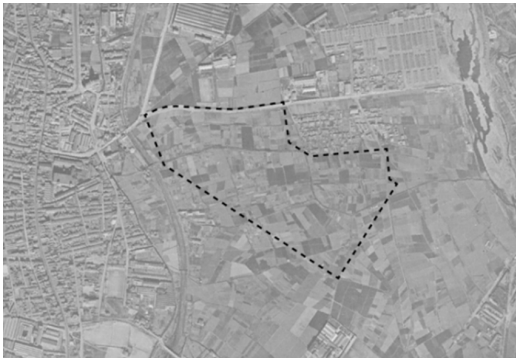
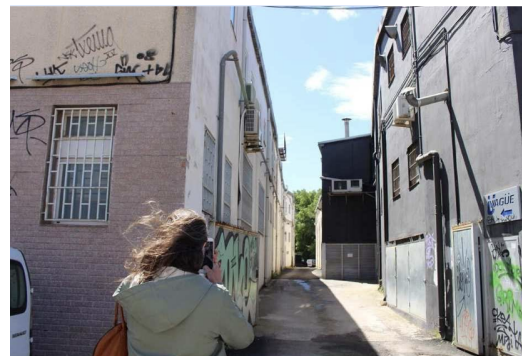


Figure 2: Old orthophoto Torrent de l'Estadella



Figure 3: Current orthophoto Torrent de l'Estadella



Figures 4 & 5: Photos of the study area

A key surrounding of the neighbourhood includes Sant Andreu neighbourhood, along Carrer de Sant Adrià, just north of the site. This lively and dynamic neighbourhood is isolated from the Torrent de l'Estadella study area by a new pedestrian zone created on the top of the railway (so on a different level). The new Sant Andreu train station is located on this platform, with wide open areas, but with a lack of shade and public furniture.

This platform currently, connects two neighbourhoods, Bon Pastor and Sant Andreu, via Torrent de l'Estadella. Therefore, the study area will play a valuable role in bridging these two neighbourhoods. Although these construction works will still take a few years to be completed, proposals should consider Torrent de l'Estadella's future role within the connected urban fabric, as well as its current situation as being surrounded by construction works.



Figure 6: Sant Andreu neighbourhood



Figure 7: New pedestrian platform above the rails.

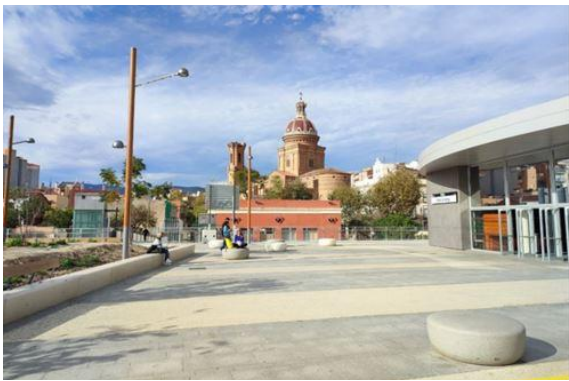


Figure 8: New Sant Andreu Comtal train station



Figure 9: Linear park project

This platform adds another benefit to the study area, linking the metro to the future LaMercedes eco-district. This area is part of the Torrent de L'Estadella study area and is a mixed-use model design, the type of city envisioned for the future. LaMercedes project combines work, leisure, housing, culture and climate resilience, whilst respecting the area's industrial past, preserving industrial buildings, and integrating public and private spaces and amenities. This area is planned to become a new eco-district. Located on the upper edge of the Torrent de L'Estadella industrial estate, it is promoted as a catalyst of the industrial regeneration of the surroundings.



Figure 10: Current Mercedes factory



Figure 11: Future lineal Park, LaMercedes eco-district



Figure 12: LaMercedes eco-district



Figure 13: LaMercedes eco-district

LaMercedes is part of the Productive Areas Strategy, which aims to regenerate industrial areas into mixed-use areas, combining housing, leisure, productivity and equipment, inside a sustainable neighbourhood with pacific surroundings.

Some of the objectives of these interventions are:

- Promoting innovation & revitalising urban industrial enterprises.
- Define the model of an integrated productive urban fabric that allows the consolidation and improvement of current economic activities.
- Define the necessary mobility model for existing or potential activities.
- Establish urban parameters that allow the location of value-added businesses related to the green and circular economy.
- Improve the public realm and related infrastructure and social services.

In the south-east of the study area is Amazon Logistics. In this part we find part of the new Verneda Road, which currently only serves this company. This is because it ends in a dead-end roundabout and lacks communication with other areas.



Figure 14: Amazon Logistics



Figure 15: Verneda street

The south-western edge of the site is bordered by railway tracks, and the Barcelona Metropolitan Transport (TMB) depot. It is difficult to envisage possible connections to the city network in the short term, as the tracks are currently buried.

The south-eastern edge of the area borders Santander Street. The area on the other side of this street is an industrial area. Fray Junipero Serra, on the north-eastern edge of the study site, also borders an industrial area. The generous width of Torrent de l' Estadella street has been highlighted as an opportunity. In the industrial area, there are privately owned industrial buildings and warehouses.

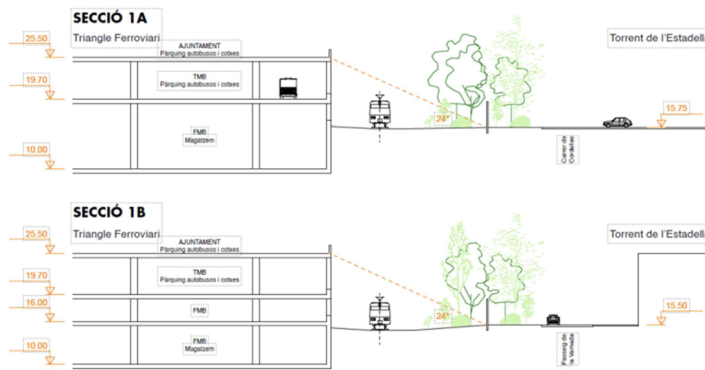


Figure 15: railway triangle and Torrent de l'Estadella sections



Figure 16: View of an interior street

The proximity of Torrent de L'Estadella to the Besòs river is also an important factor to consider. Considering the strategic economic sectors, it's important to act at the metropolitan, urban and neighbourhood levels. Recognising the value of the Besòs River as an urban unifying river, with strategic economic opportunities, is crucial.



Figure 17: Actual Besòs river



Figure 18: Project of Besòs river

There are many vacant spaces in this study area that are currently privately owned. Four key problems include: car-centric spaces, disruption to the urban and social fabric, abandoned warehouses and a lack of public spaces.



Figure 19: Opportunities Torrent de l'Estadella



Figure 20: Activities Torrent de l'Estadella

Students' proposals should ensure Torrent de l'Estadella maintains its productive, industrial value, whilst developing new, green and inclusive uses for the area.

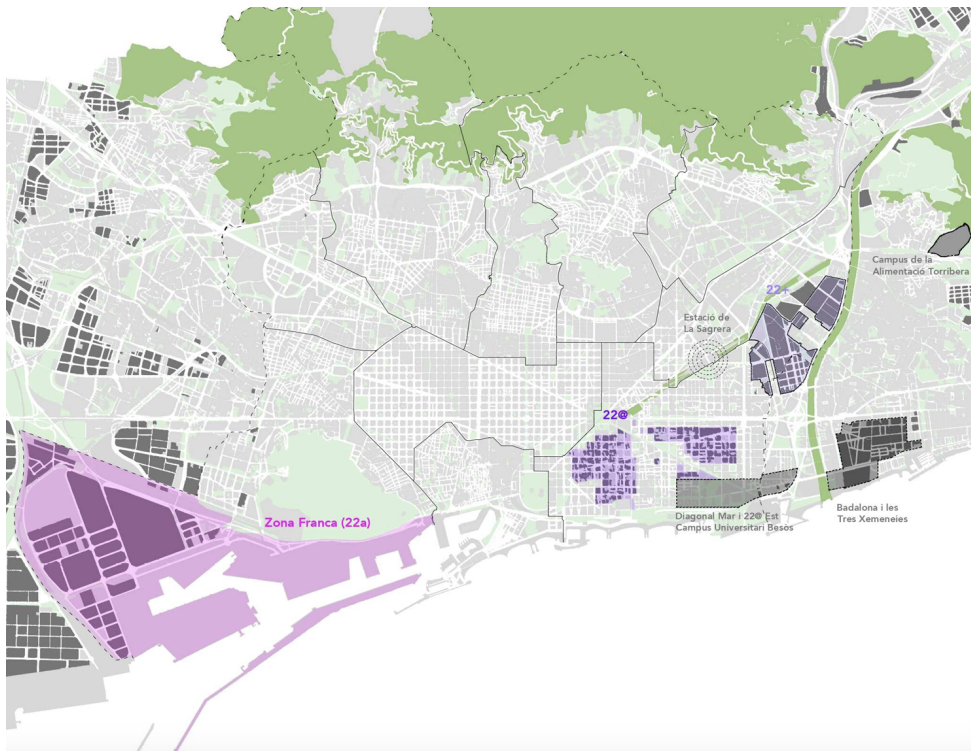


Figure 21: Productive areas in transformation in the metropolitan scale | Barcelona City Council

Any new public spaces and facilities produced should enhance the existing urban fabric. Working on the relations between the borders will ensure the process and the impulse of these areas over time. The metropolitan scale is also an important factor to consider, as well as the site's role as a link and connection corridor to its surroundings.



Figure 22: Aerial Photo | Barcelona City Council

City climate priorities and specific environmental challenges

Barcelona has a Mediterranean climate as it is located on the coast of the Mediterranean Sea and the Collserola mountain, between the Llobregat and Besós rivers. The city faces following major environmental challenges including: heat waves, hot nights, heavy rainfall, droughts, loss of biodiversity and water insecurity.

As a result of this, the city is committed to implementing a multifunctional, efficient and compact urban model that improves the quality of life for all citizens. The city's planning criteria are based on its research on sustainable solutions to urban, socio-economic and environmental problems. This means planning criteria must be introduced to increase and diversify urban green spaces, build a multifunctional urban fabric, reduce forced climate migration, use of public transport, and increase energy efficiency and water saving.

Barcelona wants to reclaim its neighbourhoods and streets for its inhabitants and visitors, and create public spaces for everyone to enjoy. The city plans to implement a series of actions that will transform its public space, reduce car-parking, and provide an exemplar new urban model. A regenerated city is one that encourages meeting places, reactivates the local economy and promotes neighbourhood life. In the case of Torrent d'Estadella, all these factors are important, as well as innovative economic solutions.

The following priorities are outlined in [Barcelona's Sustainable Development Plan](#), and should be considered in this project:

- Improving pedestrian networks and introducing green infrastructure.
- Creating meeting places and encouraging interaction between citizens, workers and neighbourhoods.
- Maximising nature and permeable surfaces in the built environment.
- Improving neighbourhoods' connectivity, both internally, and to the wider city.
- Improve the accessibility of buildings and public spaces.
- Thinking about the city from a gender perspective. Implementing security measures such as public street lighting and passive surveillance.
- Reduce waste via efficient management systems and recycling programmes.
- Enhancing resilience against extreme weather events and offering climate shelters.

Specific planning rules and regulations

Originally, Torrent d'Estadella was an industrial area created following the lines of the agricultural division. This produced a disjointed urban fabric that is not connected to surrounding areas. This type of division creates discrepancies within the city, in addition to those created by topographical or geographical incidents.

The urban plan in this area should be rethought, in order to create a better continuity with surrounding fabrics, without losing historical character. Existing plots should be redesigned to align with the city's vision, but should be adapted to the contemporary technologies and existing uses. For specific planning information on Barcelona, please refer to the [online planning tool](#)

Language requirements

Proposals must be submitted in Catalan, Spanish or English.