

Luxelakes Park Community, Chengdu

Sichuan Tianfu New Area, 610000

Luxelakes is located in the burgeoning Tianfu New District of Chengdu City which is bisected by Tianfu Avenue, a 50 km long city axis road within the south of Chengdu. Luxelakes is the first high-end project built in Tianfu New Area, a national level area which has a total planned area of over 553 hm² and an anticipated population of 150,000. Luxelakes water area covers 1.4 million square metres and is a prominent urban wetland in Chengdu, exceeding the total lake area of Chengdu's 5 main districts. Luxelakes has excellent transport connections with the new and old airport located 30-mins away and is served by two metro stations. Luxelakes Park Community

is an open international community which incorporates a mixture of high-quality residential areas, industry-city integration and national 4A scenic spots. Its city-scale layout enables the integration of residence and living. The area identified is the starting point of Lukelakes, which is the most active area and demonstrates new construction at Luxelakes. The project should aim to develop strategies which focus on a complete neighbourhood, people-centred mobility, green buildings & energy as well as circular resources. The proposed measures should assist Luxelakes to achieve its goal of becoming a zero-carbon community.



Approx. site area:
20 ha.

Key Information:

The proposed area contains a community government service center, a public activity building, 5 residential groups, a primary school, a community business square and 3 green public spaces. There are approximately 3000 residents, who are prominent individuals from various industries. Annually, three million visitors travel to Luxelakes, the majority being young parents, fashion enthusiasts and influencers.

Priority areas & main expectations:

The project should develop strategies which focus on the following topics:

Mobility: with a focus on tactical urbanism and street design within the Tianfu New Area;

Circular resources: to promote circularity in Luxelakes by reducing resource use and avoiding waste;

Complete neighbourhood: to further enhance a 'Park community' via compactness and mixed-use spaces, proximity and decentralization, active frontages as well as adaptable spaces; and,

Green buildings & energy: to create a zero-carbon community by reducing energy demand, investing in energy infrastructure and decarbonizing energy.

Presentation of the site and development expectations

In early 2018, when General Secretary Xi Jinping inspected Chengdu, he put forward the grand concept of building a “park city”. Luxelakes stood out for its rich ecological environment and exquisite surroundings, becoming the first community in Chengdu to be designated as a “Park community” with the goal of investigating and implementing the new concept, as well as constructing a pilot park city neighbourhood in Chengdu.

Luxelakes has combined local resources for three consecutive years, focusing on zero-carbon, biodiversity and multi-level environmental education for residents. In total there are 8 resident-led environmental action groups within the community which include the Ecological Wetland Education Group, Residents' Participatory Water Quality Monitoring Group, Prevent Littering Publicity and Advocacy Group, Community Organic Waste Reduction and Composting Group, Community Farming and Nature Education Group, Citizen Publicity Group of Popular Science Short Film on Water Environment Knowledge, Community Nature Guide Publicity Group and the Community Bird Watching Group. The groups design activities suitable for a diverse range of participants including children, teenagers, parents, young people as well as the elderly in the community. More than 200 activities have been carried out, and more than 3,000 people have participated. By supporting residents to carry out projects, a strong volunteer action system will be established.

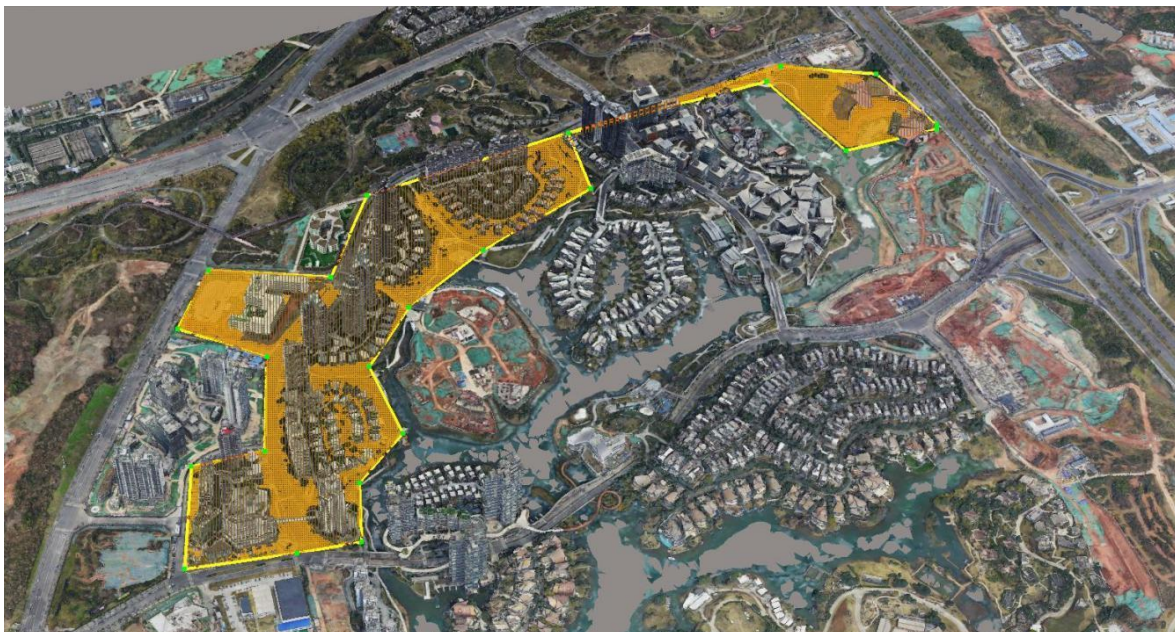


Figure 1: 3D image for identified area (yellow area)

Within Luxelakes, there are approximately 50 design studios and over 100 renowned-designers from all over the world as well as city-level interactive spaces i.e. A4 Art Museum, Water Theatre, Luke' Island and Tianfu Food Island and a number of cultural and artistic spaces, including Xunlu Library and Luke Society.

“Luxelakes Flower Life Festival” “Dragon Boat Festival” “Fishing Festival” and “Luke’s Night” are four significant community festivals organised by Luxelakes Park Community. The annual Dragon boat festival attracts thousands of residents to actively participate , as well as tens of thousands of tourists to watch the game and has therefore evolved from a simple community festival into a city-wide carnival. Furthermore , a wide variety of workshops including handicrafts, tea art, nature education, etiquette etc, have been

created to enhance community harmony and foster 'neighbourly relations', meeting the needs of residents. It has also become popular for residents to get involved in community building projects, with enterprises, businesses and residents working together, particularly on environmental protection.

There is a strong mission to create a harmonious, happy and beautiful park community. Park community is a fundamental part of a Park city, as well as the place where residents' aspirations for a better life are fulfilled and carried out. It is based on the development of a park community management system that achieves an organic balance between order and vitality. Luxelakes Park Community is forging ahead with the aim to create a better living environment for all park city residents.

In line with the 'Guidance to design a green and thriving neighbourhood', the community aspires to the following; promote mobility i.e. improving roads and adding bike-sharing amenities; foster circular resources i.e. introducing second-hand stores and community-level second-hand materials collection, storage and trading platforms as well as reducing resource waste and promoting recycling; promote a complete neighbourhood via the 15-minute city model and focus on green buildings and energy by reducing consumption carbon emissions.

City climate priorities and specific environmental challenges

The Chengdu Five-year Air Pollution Prevention and Control Action Plan was successfully recognised in 2019 and actively demonstrates Chengdu's achievements in improving air quality in the field of climate change, especially in recent years. In 2020, Chengdu joined the following C40 networks: Private Building Efficiency Network, Zero Emission Vehicles Network and Sustainable Waste Systems Network.

The development of a zero-carbon community in Chengdu began in 2022 after the work plan for the pilot construction zero-carbon emission zone trial was issued. By 2025, no less than 30 near-zero carbon communities will be built. The trial aims to explore how zero carbon can be achieved at community level. Proposals should take into consideration the plan and expand on existing strategies.

In 2022, Chengdu experienced extremely high temperatures which increased awareness amongst residents of the threat of climate change and how it directly affects them. The frequency of heat waves in the future are expected to increase, and therefore measures to mitigate the Urban Heat Island (UHI) effect and improve resilience are key. In Chengdu, Luxelakes is a significant urban wetland and a valuable source of water, therefore water management and conservation are essential.

The project should incorporate measures such energy consumption reduction, low-carbon lifestyle improvements, as well as strategies to reduce traffic and congestion.

Students should take these all into consideration when designing their proposal and propose tangible solutions that can be potentially implemented.

Specific planning rules and regulations

Teams should refer to the following documents for site specific planning rules and regulations:

The 14th Five-Year Plan for Chengdu's National Economic and Social Development and the Outline of the Long-term Goals for 2035

http://www.chengdu.gov.cn/chengdu/c147312/2021-04/25/content_a1392890ad0e411a860d0439a5077e5d.shtml

Work Plan of Chengdu Near Zero Carbon Emission Zone Pilot Construction (Trial)

http://sthj.chengdu.gov.cn/cdhbj/c110753/2022-03/14/content_65f0736f3bc340c8862decf5974a22b2.shtml

Air Pollution Control Action Plan of Chengdu in 2022

http://sthj.chengdu.gov.cn/cdhbj/c110755/2022-03/23/content_fc4d2e2cf773402e89b670d16b86ad04.shtml

Regulations of Chengdu on the Prevention and Control of Air Pollution

<http://www.cdrd.gov.cn/website/dffg/17546.jhtml>

Regulations of Chengdu on the Promotion of Green Buildings

<http://www.cdrd.gov.cn/website/dffg/20556.jhtml>

Regulations of Chengdu on the Promotion of Civilized Behavior

<http://www.cdrd.gov.cn/website/dffg/20347.jhtml>

Regulations of Chengdu on the Promotion of Community Development and Governance

<http://www.cdrd.gov.cn/website/dffg/16327.jhtml>

Urban Construction Regulations of Chengdu Beautiful Livable Park

<http://www.cdrd.gov.cn/website/dffg/17548.jhtml>

Regulations of Chengdu City on Household Garbage Management

<http://www.cdrd.gov.cn/website/dffg/16329.jhtml>

Personal Behavior Advocacy Handbook for Near Zero Carbon Communities

<http://www.cdswszw.gov.cn/qzdt/Detail.aspx?id=27057>

Ten Measures to Support the Development of Community Business (Trial) of Tianfu New Area

<http://www.cdswszw.gov.cn/zcfg/Detail.aspx?id=27101>

Action Plan of Chengdu to Build a Park City Demonstration Area in Accordance with the New Development Concept (2021-2025)

<http://www.cdswszw.gov.cn/zcfg/Detail.aspx?id=26853>

Guidelines for future Park community construction in Chengdu

<http://www.cdswszw.gov.cn/zcfg/Detail.aspx?id=26916>

Decision of Sichuan Provincial Committee of the Communist Party of China on promoting the high-quality development of green and low-carbon advantageous industries with the goal of achieving carbon peak carbon neutrality

<http://www.cdswszw.gov.cn/zcfg/Detail.aspx?id=26661>

Opinions of Chengdu Municipal Committee of the CPC Chengdu People's Government on the Implementation of Ten Projects for a Happy Life

<http://www.cdswszw.gov.cn/zcfg/Detail.aspx?id=26261>

The construction of near-zero carbon communities makes a green, low-carbon and happy life within reach

<http://www.cdswszw.gov.cn/qzdt/Detail.aspx?id=27109>

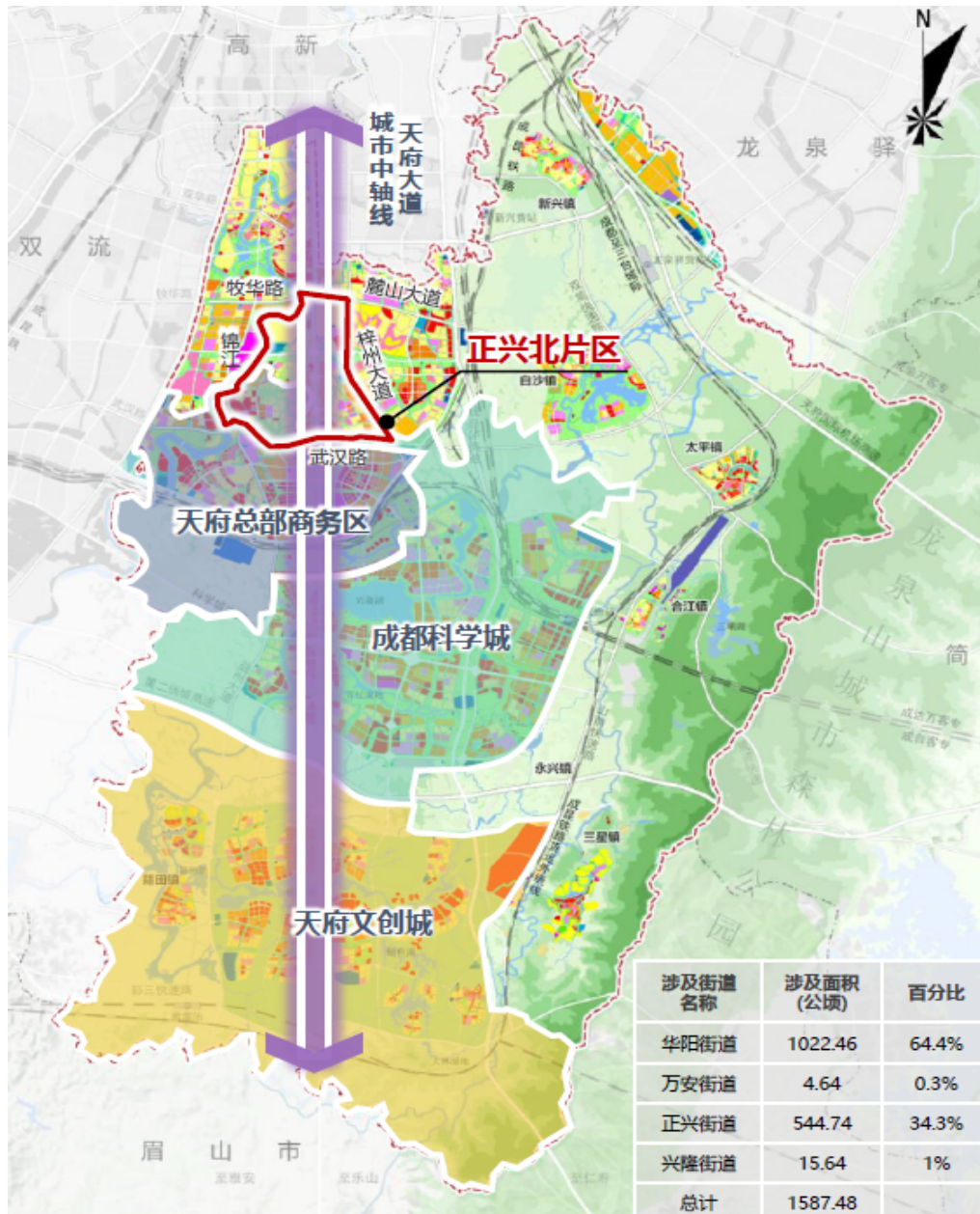


Figure 2: Luxelakes location in Tianfu New Area (red circle)

Language requirements

Proposals must be submitted in English or Chinese.

City-specific awards

In addition to the awards specified within the Regulations document, all participating students involved in the Luxelakes project may receive the opportunity to carry out an internship within the following fields; architectural design, landscape design, environmental protection, public welfare charity, community business, community governance, etc. Students may also be eligible for a gap year support plan, a short-time volunteer trip as well as exposure within a community history exhibition.

Winning projects may also be implemented.