

Students Reinventing Cities Amman

Share your vision to
transform urban spaces
into green & thriving
neighbourhoods.



Students Reinventing Cities Webinar Agenda



Students
Reinventing
Cities

1. Introduction

Lina Al- Attal, Head of Sustainable Development and Amman Resilience Unit
Dept. *Greater Amman Municipality*

2. Competition Presentation

Ellie White, Reinventing Cities Project Officer
C40 Cities

3. Sustainable & resilient planning in Amman

Eng. Nisreen Al-Daoud, Director of the Sustainable Development and Amman Resilience Unit
Eng. Ayman Al-Najdawi, Director of the Comprehensive Planning Department
Greater Amman Municipality

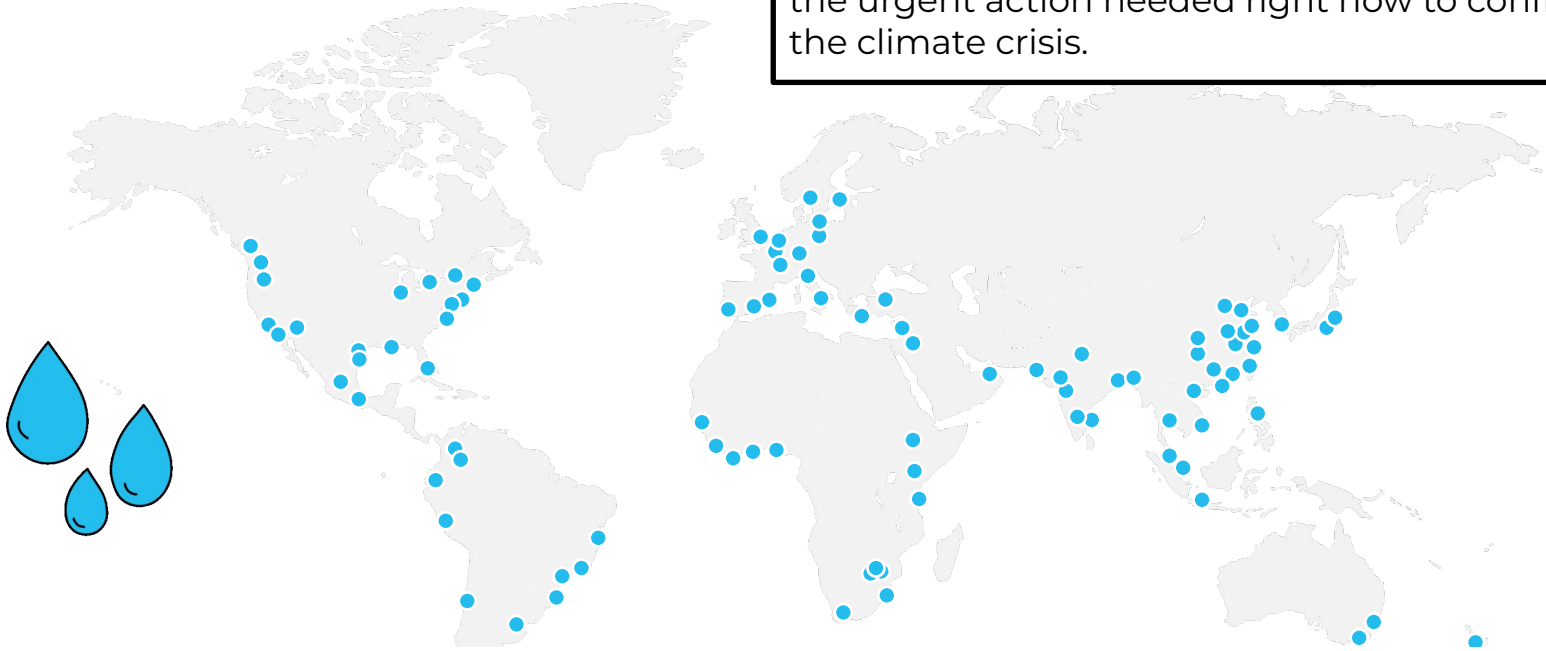
4. Site Presentation

Eng. Hadeel Al-shaweesh, Architectural engineer
Greater Amman Municipality

5. Q+A

C40 Cities

C40 is a network of mayors of **nearly 100 world-leading cities** collaborating to deliver the urgent action needed right now to confront the climate crisis.



Directly representing just under **600 million** residents.
Making up more than **20%** of the global economy.

Why do cities matter?

Cities occupy
2%
of the world's
landmass

Cities consume
around
75%
of the world's
energy

Cities
create over
70%
of energy-related
greenhouse gas
emissions

Cities
generate over
80%
of the
world's GDP

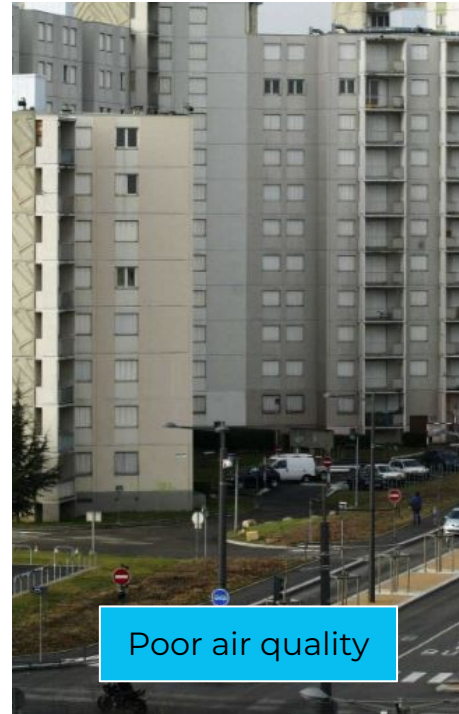
The urban model of the 20th Century led to the development of car-oriented public spaces, specialisation of neighbourhoods and urban sprawl. **Cities are seeking new design models to transform urban life.**



Poor quality of life



Long commutes



Poor air quality



Lack of facilities



Integrated spatial planning for more compact and efficient urban growth, through **proximity, mixed use & Transit-Oriented Development**, could **reduce greenhouse gas emissions by 23-26% by 2050.**

IPCC, April 2022

What is Students Reinventing Cities?

An international **competition** that celebrates innovative proposals that **reduce emissions and improve quality of life**.

For **university students** (all ages & disciplines) & **youth (18-28)** to form multi-disciplinary teams and **collaborate with cities**.

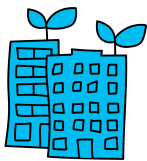
To reimagine urban spaces into **green & thriving neighbourhoods**, aligning with **city priorities**.



How does it work?



Cities identify sites they would like to transform & revitalize



C40 organises the international competition



Youth form teams and submit their best proposals to regenerate the urban areas



Students
Reinventing
Cities

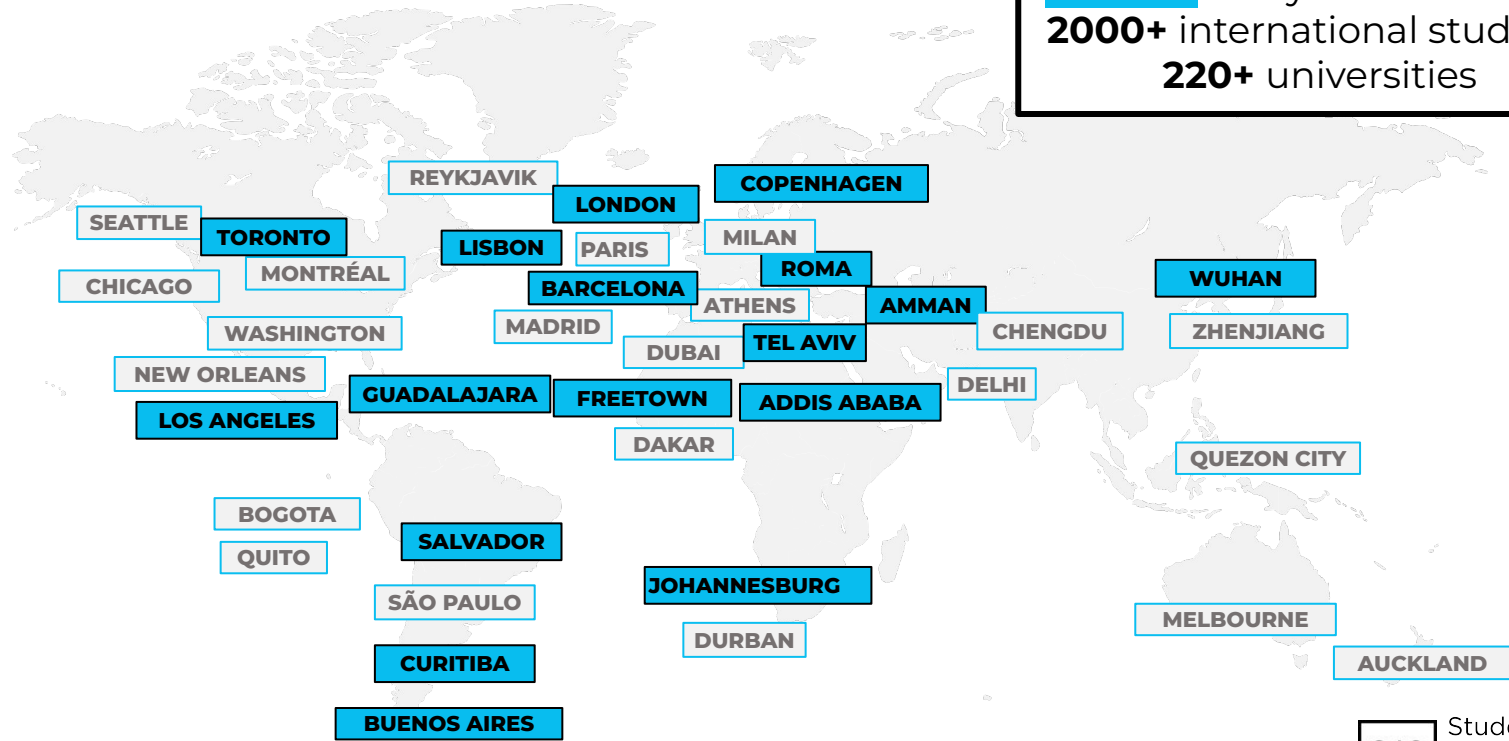
Who can apply?

- **University students** of any age & discipline (*registered in 2023/24 academic year*).
- **Young people** (18-28).
- **Local** and **international** participants.
- Mixed & **multidisciplinary** teams highly encouraged.
- No maximum number of team members.



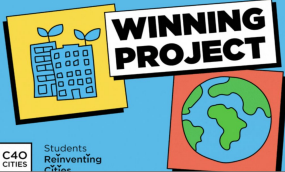
A growing global movement

3 editions
17 cities this year & 39 in total
2000+ international students
220+ universities



Global success of the competition

A global competition for students to share their vision for green & thriving neighbourhoods



WORLD ARCHITECTURE NEWS

Students Reinventing Cities: C40 Cities competition to combat climate change

Teams of university students will share their vision for transforming 18 city neighbourhoods to deliver a green and just recovery from the COVID-19 crisis

TEDx Students Reinventing Cities



Press Release 2021-09-28

18 outstanding teams announced as winners of students reinventing cities competition

1,100 students from 150 universities respond to the call for ideas to reinvent parts of their cities.

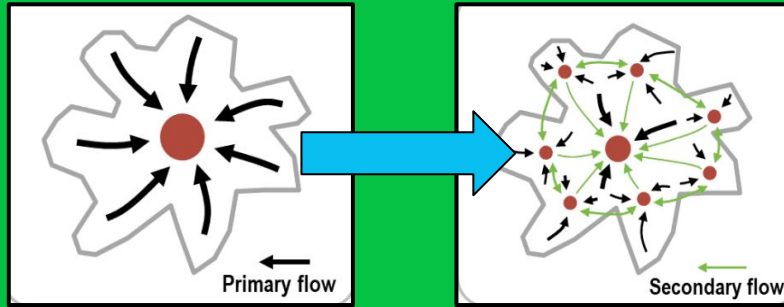
Success in Amman



Global video



The Proximity Approach



Monocentric

Polycentric

Mix of people and a wide range of housing choices.

Mix of uses with integrated local amenities and services.

Public spaces that are designed around the needs of the people.

15 minute City
Paris, Milan, Rome

15-minute Community Life Circle
Chengdu

Superblock
Barcelona

20-minute Neighbourhood
Melbourne

Complete Neighbourhood
Portland

Wellbeing City
Buenos Aires

Vital Neighbourhood
Bogota

Liveable Neighbourhood
Glasgow

And many more...



Students
Reinventing
Cities

Competition Framework

Designing **Green & Thriving Neighbourhoods**, a **cross-sectoral & holistic** design approach that maximises **environmental & social benefits**.

Advocating the **proximity model** - a model of **polycentric city** made of multiple **complete neighbourhoods**.



Green economy



Complete neighbourhood



People-centred streets & mobility



Sustainable living



Green spaces & climate resilience



Circular resources



Green energy & buildings



Clean construction



Connected places



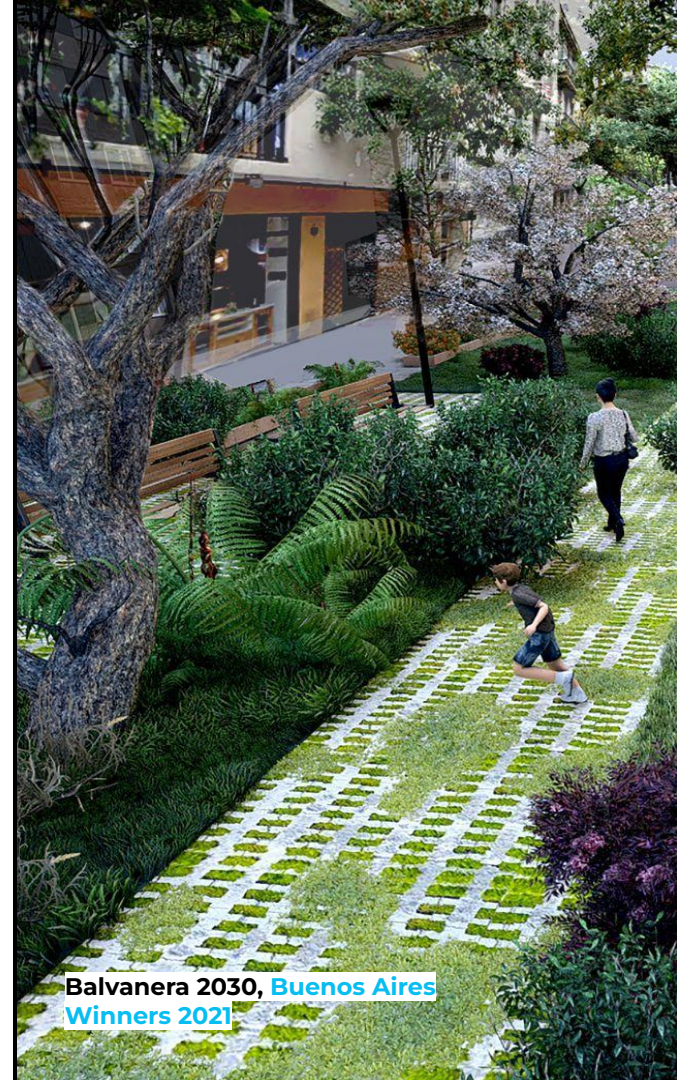
A place for everyone

GREEN
Pathway to near-zero emissions

THRIVING
Resilient & people-centred place

Develop proposals to reimagine an urban area considering:

City Priorities	Align with city's Climate Action Plan & redevelopment expectations
Green & Thriving Solutions	Solutions to reduce emissions & improve quality of life
Quality of Team	Design approach , variety of expertise, work with stakeholders & additional research
Feasibility	Consider cost, technicality, & timeline



What's required in your proposal

Description of the team

Explain how team worked together

Use template

Updated Team Form

Design concept

Environmental assessment

Analysis of benefits

10 pages

Project Proposal

1 digital illustration board

3 high-res images/drawings

Graphic Presentation

Budget, timeframes & challenges

Compliance with local regulations

Stakeholders & responsibilities

3 pages

Implementation Plan

Winning teams awards

Official certificate signed by the Mayor
& Executive Director of C40

Receive coverage in local & global
communication campaigns

Present work & connect with city
officials & leading sectors

Receive **city-specific prizes**
(e.g implementation consideration,
internships, exhibitions)

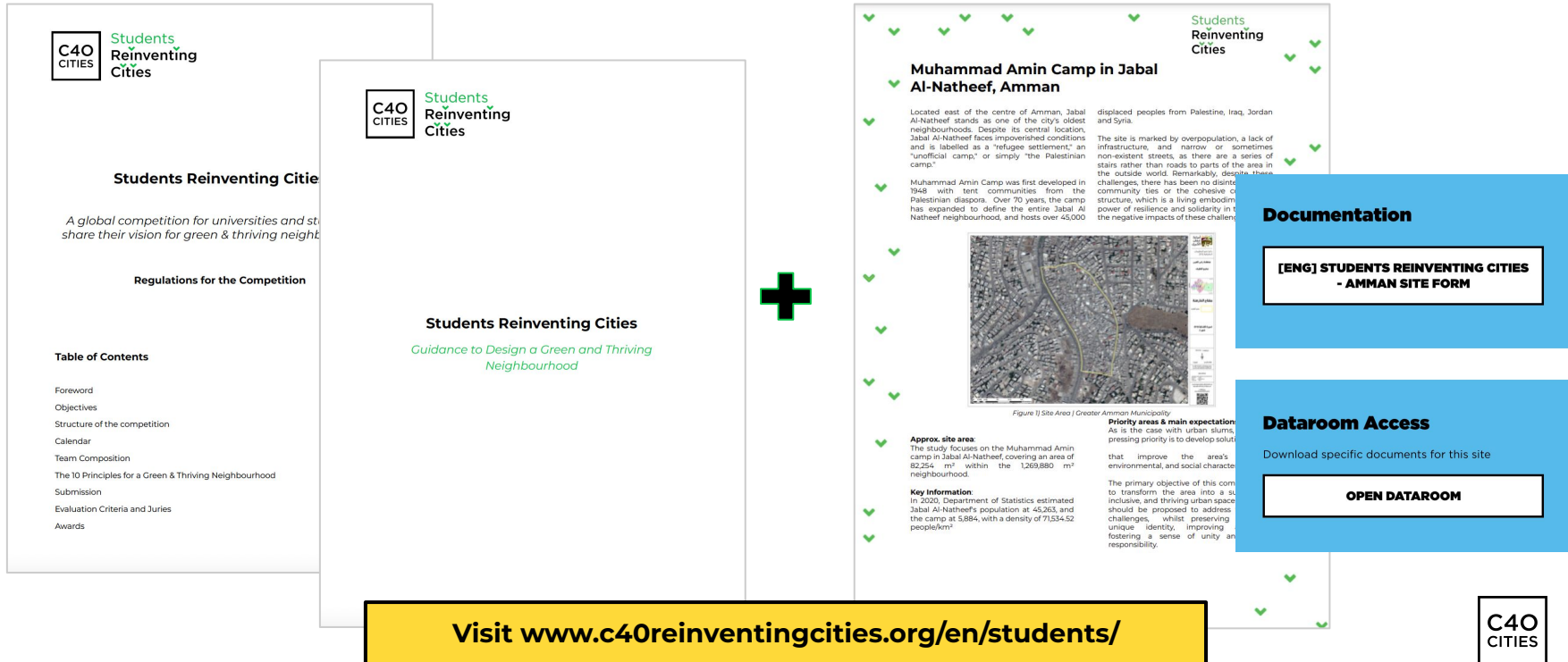


Eco-Barrio 7 de Agosto, Bogota winning team

Competition Documentation

Regulations & Guidance
(Application Guidelines page)

Site Form + Dataroom
(Sites in competition page)



Visit www.c40reinventingcities.org/en/students/

- › HOME
- › SITES IN COMPETITION 2023/24
- › APPLICATION GUIDELINES
- › FAQ
- › PREVIOUS WINNING PROJECTS
- › MANIFESTO

Students Reinventing Cities

2023/24 competition now live

Common documents

Documentation

[ENG] STUDENTS REINVENTING CITIES_TEAM FORM (PHASE 1)

[ENG] STUDENTS REINVENTING CITIES - REGULATIONS

[ENG] GUIDANCE TO DESIGN A GREEN AND THRIVING NEIGHBOURHOOD

For each site: Site Form, Dataroom & Question Box

Documentation

STUDENTS REINVENTING CITIES - SITE FORM

Dataroom Access

Download specific documents for this site

OPEN DATAROOM

Questions?

If you have a question or would like more details on the site and the Students Reinventing Cities competition, please use the form below. You will receive a response via email.

First name *

Last name *

E-mail *

Competition Timeline

Competition Launch

Info about all sites & cities live on the website. Team Registration open.

November 2023

5 April 2024

Teams Registration Deadline

Students form teams and register online.

Project Submission Deadline

Teams submit a completed proposal.

20 June 2024

Selection of winning projects

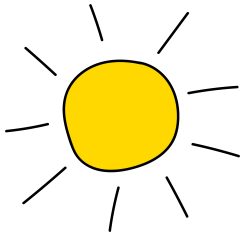
City, C40 and local experts form a jury to select the winning team.

July 2024

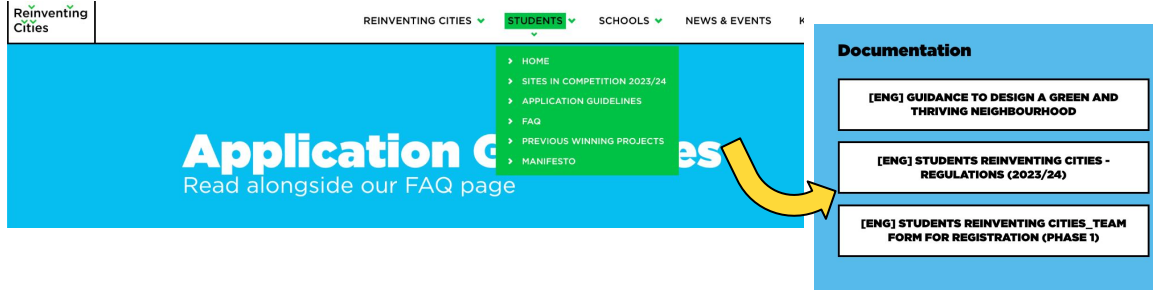
Announcement of winners

Prizes and media coverage.

September 2024



Register your team

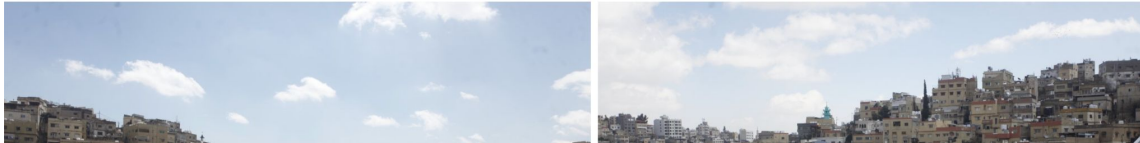


5 April 2024

Download and fill out the team form

➤ Muhammad Amin Camp, Jabal Al-Natheef Amman, Jordan

REGISTER YOUR TEAM ➤
Registration closes on Friday 5 April 2024
- 5PM UTC



Upload the form via the registration portal



**A Green & Just future is
the future we want.**



**Join the Students
Reinventing Cities Network**

c40reinventingcities.org





Students Reinventing Cities

Rehabilitation of Muhammad Amin Camp

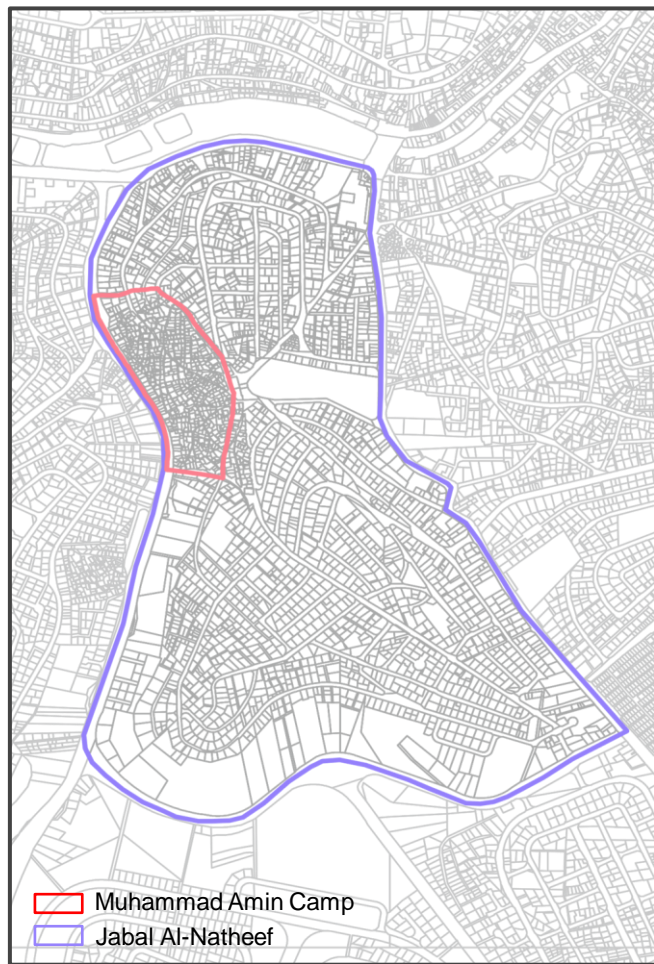
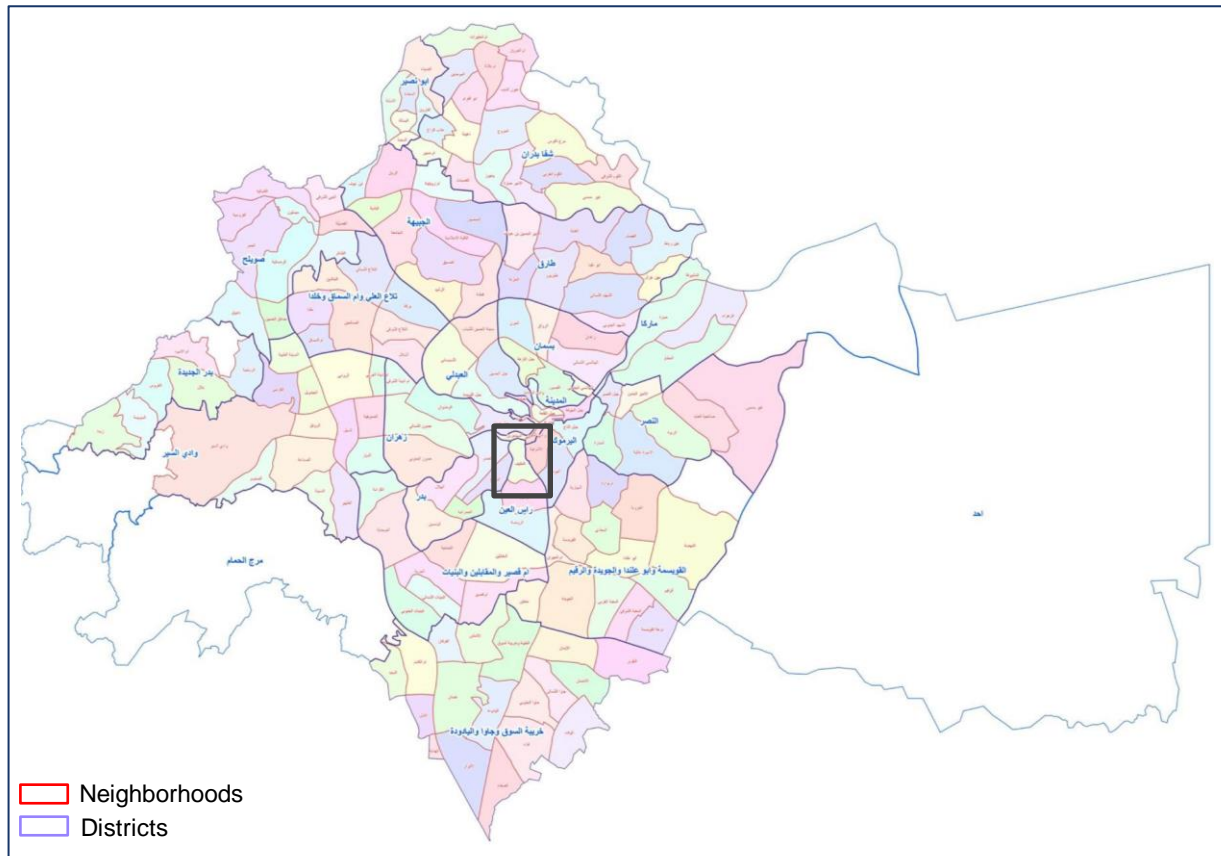
Jabal Al-Natheef- Amman

➤ Rehabilitation of Muhammad Amin Camp - Introduction

- Amman is the capital city of Jordan with a population of 4,744,700.
- Amman is a dynamic city that integrates ancient history with modernity. It's known history' dates back to the Stone Age, Hellenistic-Roman, and Islamic periods.
- Today, Amman is a vibrant hub that attracts visitors from around the world with its warm hospitality and lively atmosphere.
- The area is 800 km² divided into 22 administrative districts



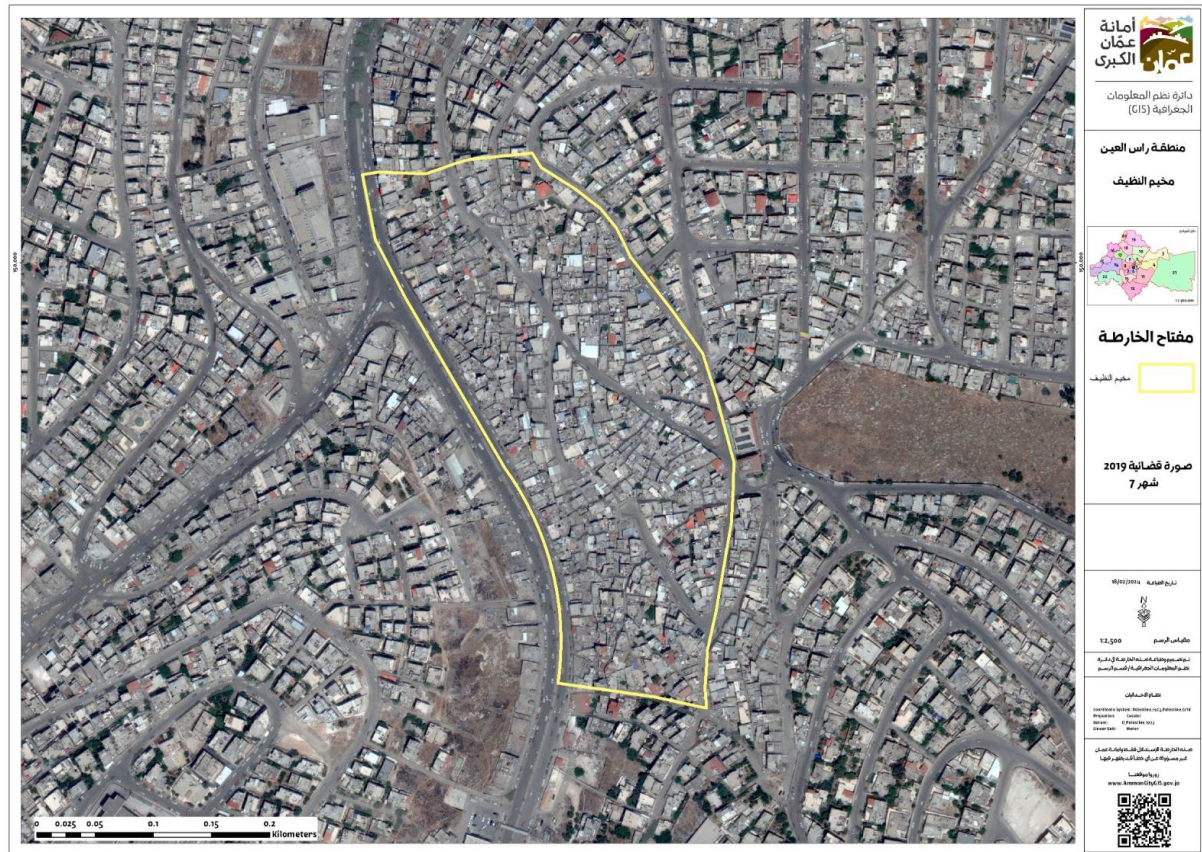
Rehabilitation of Muhammad Amin Camp - Location Map



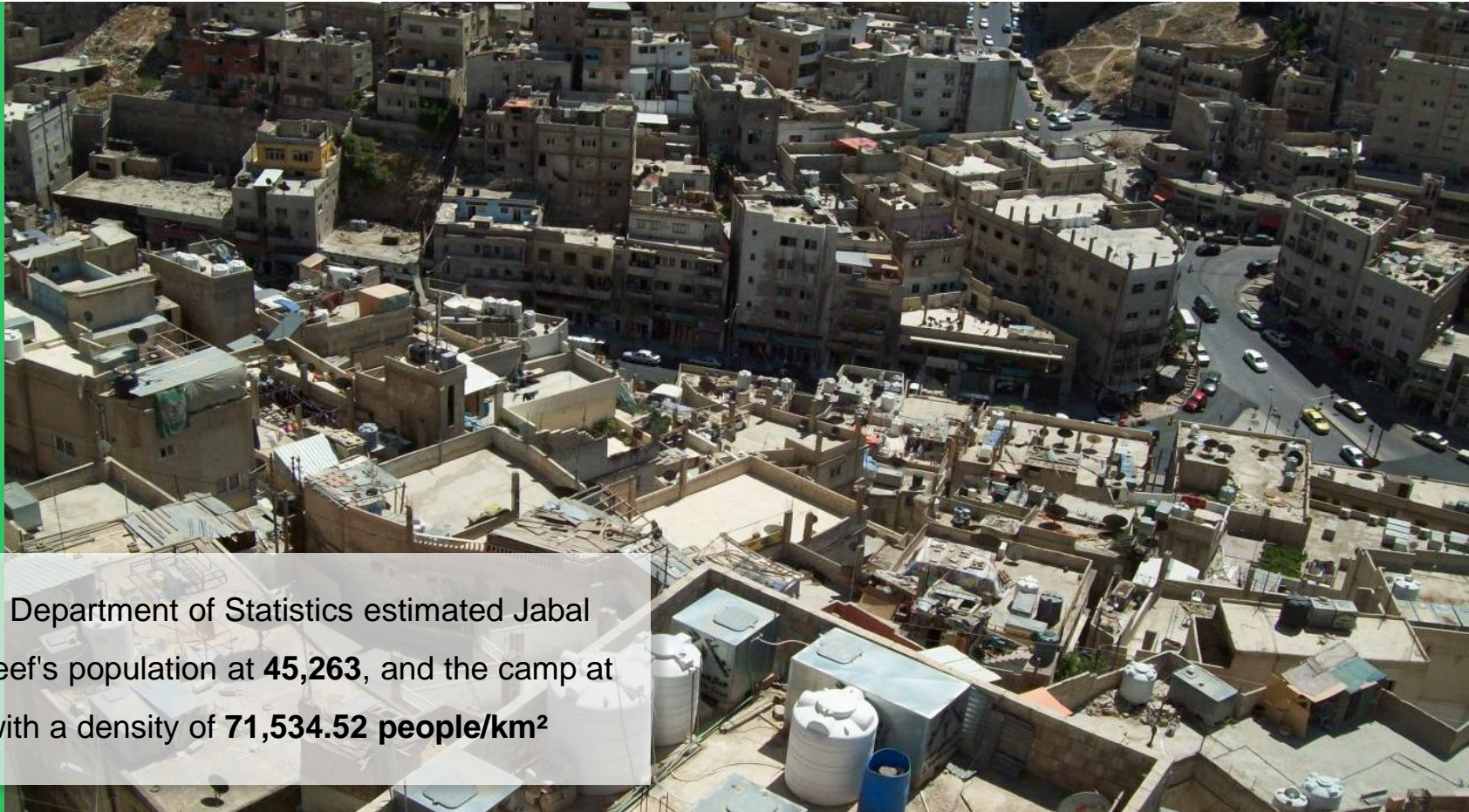
Rehabilitation of Muhammad Amin Camp - **Approx. site area**

The focus of this study extends to the refugee camp “Muhammad Amin camp” within Jabal Al-Natheef, covering an area of approximately 0.082254 km².

This camp, a microcosm within the broader Jabal Al-Natheef, represents a mere fraction of the neighborhood's vast expanse, which totals approximately 1.26988 km².



Rehabilitation of Muhammad Amin Camp - Key Information



In 2020, Department of Statistics estimated Jabal Al-Natheef's population at **45,263**, and the camp at **5,884**, with a density of **71,534.52 people/km²**

1969

After 1967, known as 'Al-Naksa', more Palestinian refugees settled in the area.

2003

The 2003 Iraq war triggered a surge of Iraqi refugees.

1948

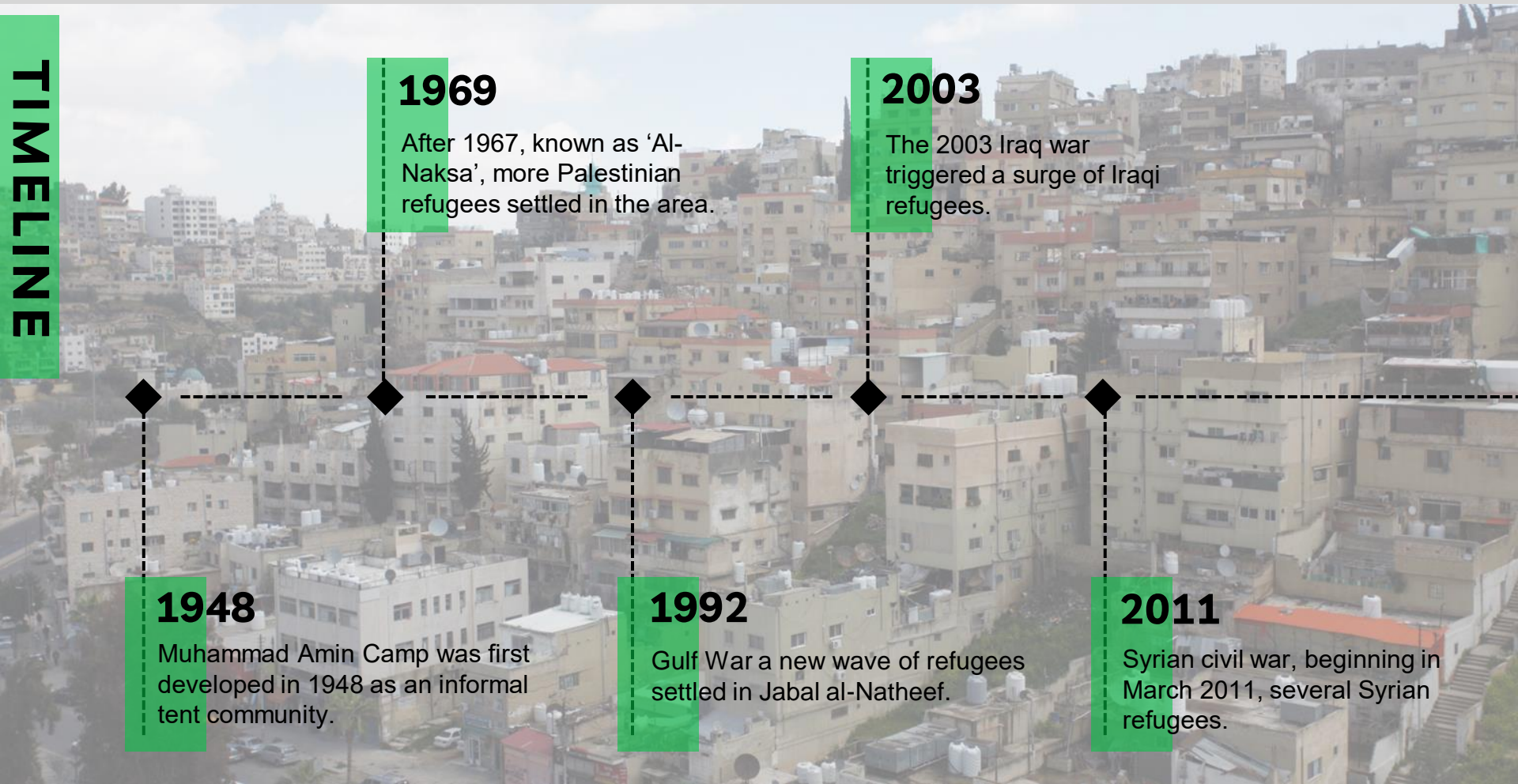
Muhammad Amin Camp was first developed in 1948 as an informal tent community.

1992

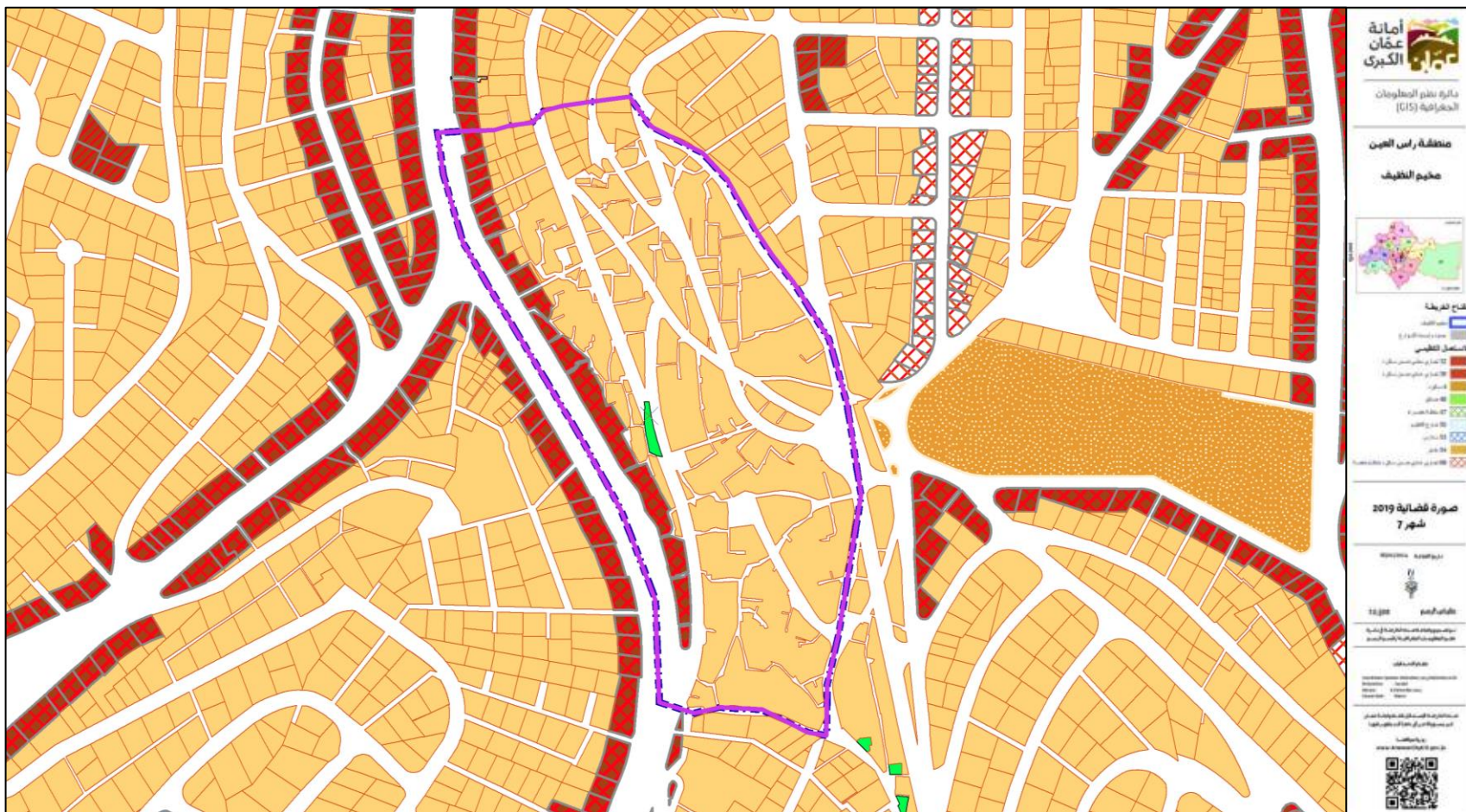
Gulf War a new wave of refugees settled in Jabal al-Natheef.

2011

Syrian civil war, beginning in March 2011, several Syrian refugees.



Rehabilitation of Muhammad Amin Camp - Main functions & Land use



- The neighborhood **relies on series of long staircases instead of streets.**
- In winter, rainwater flows from the streets into the staircases of the camp's neighborhoods, often entering the houses through the sides.



➤ Rehabilitation of Muhammad Amin Camp - **Main Challenges**



The lack of infrastructure, the basic amenities such as clean water, sanitation facilities, electricity, healthcare services, and education are often lacking or insufficient.

This results in poor living conditions, health issues, limited access to education and economic opportunities, and overall reduced quality of life in the area.



The neglected open spaces between homes, often overlooked and underutilized, stand as dim areas within the urban landscape.

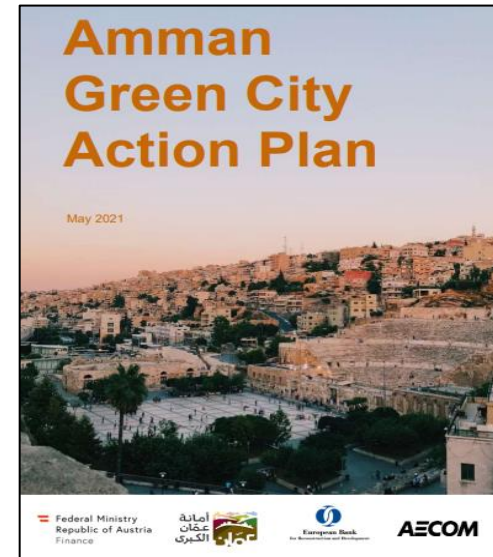
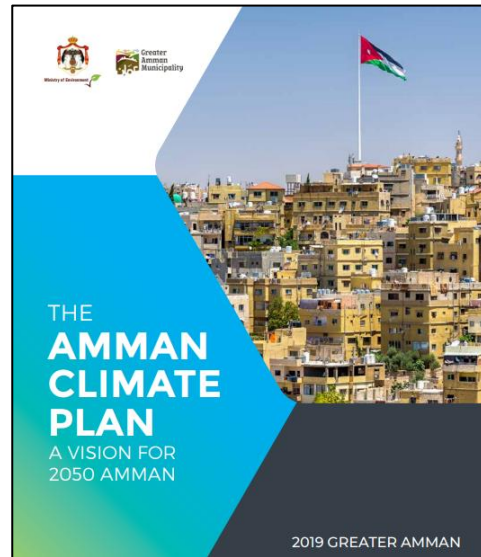
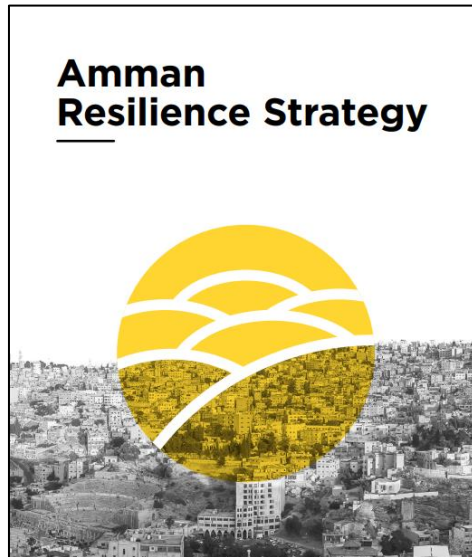
These spaces, lacking in maintenance and amenities, contribute to a sense of neglect and disconnection within the community.

The primary objective of this competition is to transform the Muhammad Amin Camp into a sustainable, connected, dynamic, diverse and vibrant neighborhood.



- **Develop a participatory planning approach** to ensure community engagement throughout the design process.
- **Improve or install basic infrastructure services** such as water, electricity, stormwater drainage, access roads, and street lighting. Ensure these measures also help integrate the area into its surroundings, and into the city itself.
- **Construct or rehabilitate existing community facilities**, including quality public space, to enhance opportunities for social interaction and empower social networks.
- **Enhance income-earning opportunities** through training, workshops, and enrichment classes.
- **Integrate climate-responsive measures to mitigate climate-associated risks**, such as urban heat islands, flooding, and air and soil pollution.

Amman City, as outlined in its comprehensive Climate Action Plan, places paramount importance on fostering environmental sustainability and resilience in the face of climate change. Priorities encompass reducing carbon emissions, promoting energy efficiency, enhancing urban mobility, creating green spaces, and fortifying the city's overall adaptive capacity through specific environmental objectives and solutions





“If we wish to rebuild our cities, we must first build our neighborhoods”

Harvey Milk

THANK YOU!
Do you have any questions?

- Al-Belbisi, F., 2013. The camp of Mohammed Amin (Jabal Al-Nazif): Indeed, Allah is with the patient. Available online: <https://www.alshahidonline.net/index.php?page=article&id=1975> . Accessed March 18, 2024
- DOS 2022. Statistical YearBook of Jordan 2022.
- GAM 2017. Amman Resilience Strategy.
- GAM 2019. The Amman climate plan: A vision for 2050 Amman.
- Hussein, R., 2021. Amman with its stairs and its elderly Friendship that may start from a doorstep. Available online: <https://khatt30.com/post/%D8%A3%D8%AF%D8%B1%D8%A7%D8%AC-%D8%B9%D9%85%D8%A7%D9%86/> .Accessed March 18, 2024
- Jalouqa, K., 2015. Amman, from Village to Metropolis. *Transformation of the urban character of Arab Cities since the late last century*, 23, p.23.
- Kamal, O. and Najada, H., 2015. SOCIO-SPATIAL READER: Exploring the potential of narrative in Jabal Al Natheef informal camp. *Transformation of the urban character of Arab Cities since the late last century*, 122, p.122.