

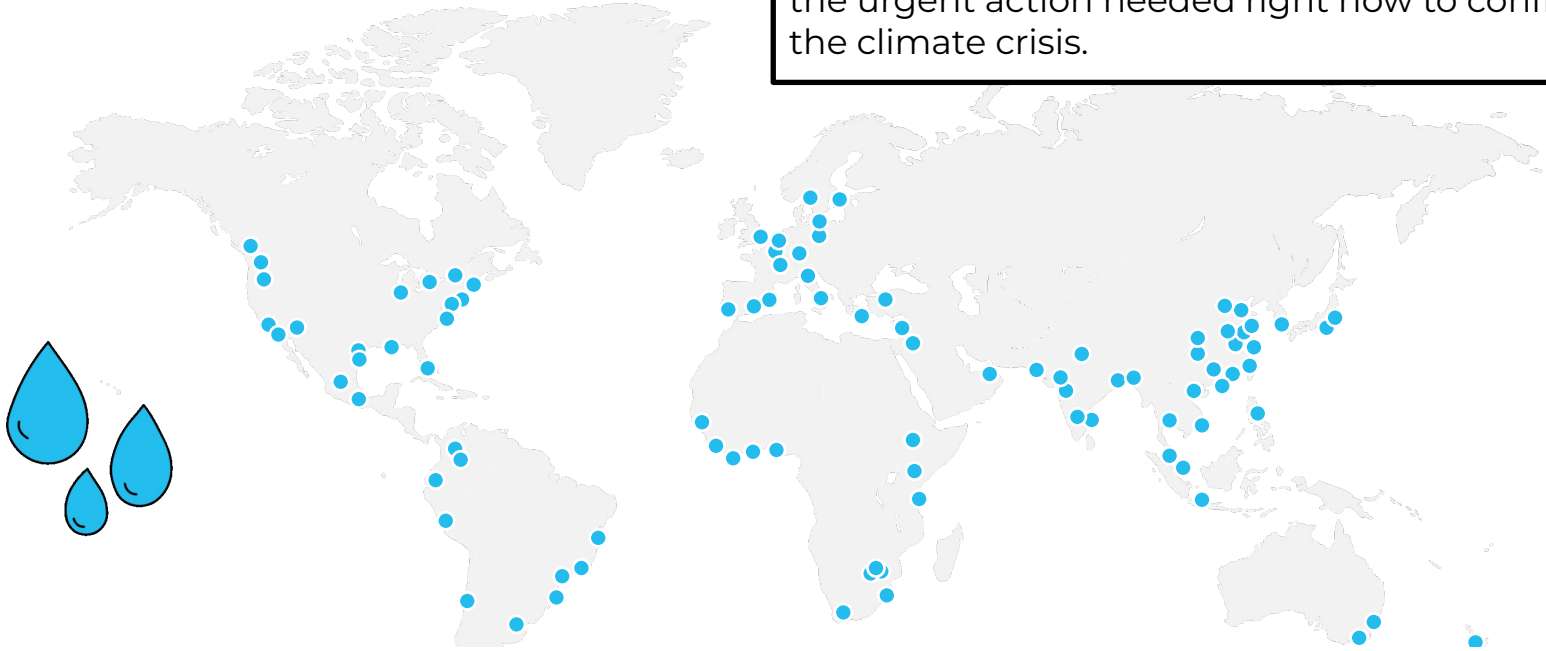
Students Reinventing Cities Curitiba

Share your vision to
transform urban spaces
into green & thriving
neighbourhoods.



C40 Cities

C40 is a network of mayors of **nearly 100 world-leading cities** collaborating to deliver the urgent action needed right now to confront the climate crisis.



Directly representing just under **600 million** residents.
Making up more than **20%** of the global economy.

Why do cities matter?

Cities occupy
2%
of the world's
landmass

Cities consume
around
75%
of the world's
energy

Cities
create over
70%
of energy-related
greenhouse gas
emissions

Cities
generate over
80%
of the
world's GDP

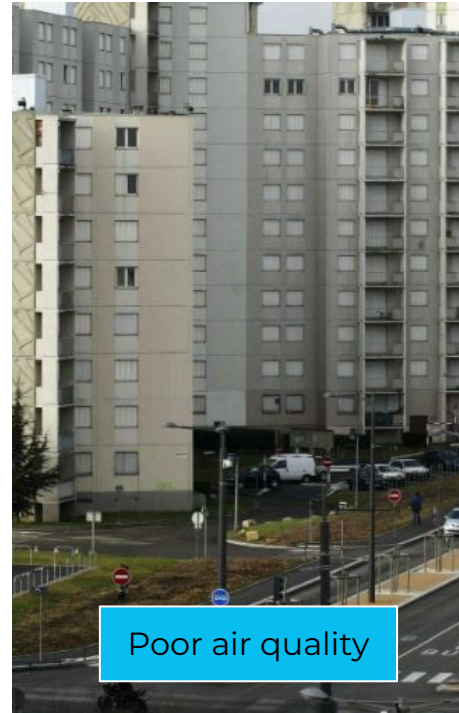
The urban model of the 20th Century led to the development of car-oriented public spaces, specialisation of neighbourhoods and urban sprawl. **Cities are seeking new design models to transform urban life.**



Poor quality of life



Long commutes



Poor air quality



Lack of facilities



Integrated spatial planning for more compact and efficient urban growth, through **proximity, mixed use & Transit-Oriented Development**, could **reduce greenhouse gas emissions by 23-26% by 2050.**

IPCC, April 2022

What is Students Reinventing Cities?

An international **competition** that celebrates innovative proposals that **reduce emissions and improve quality of life**.

For **university students** (all ages & disciplines) & **youth (18-28)** to form multi-disciplinary teams and **collaborate with cities**.

To reimagine urban spaces into **green & thriving neighbourhoods**, aligning with **city priorities**.



How does it work?



Cities identify sites they would like to transform & revitalize

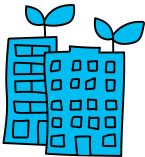


C40 organises the international competition



Youth form teams and submit their best proposals to regenerate the urban areas

7



Students
Reinventing
Cities

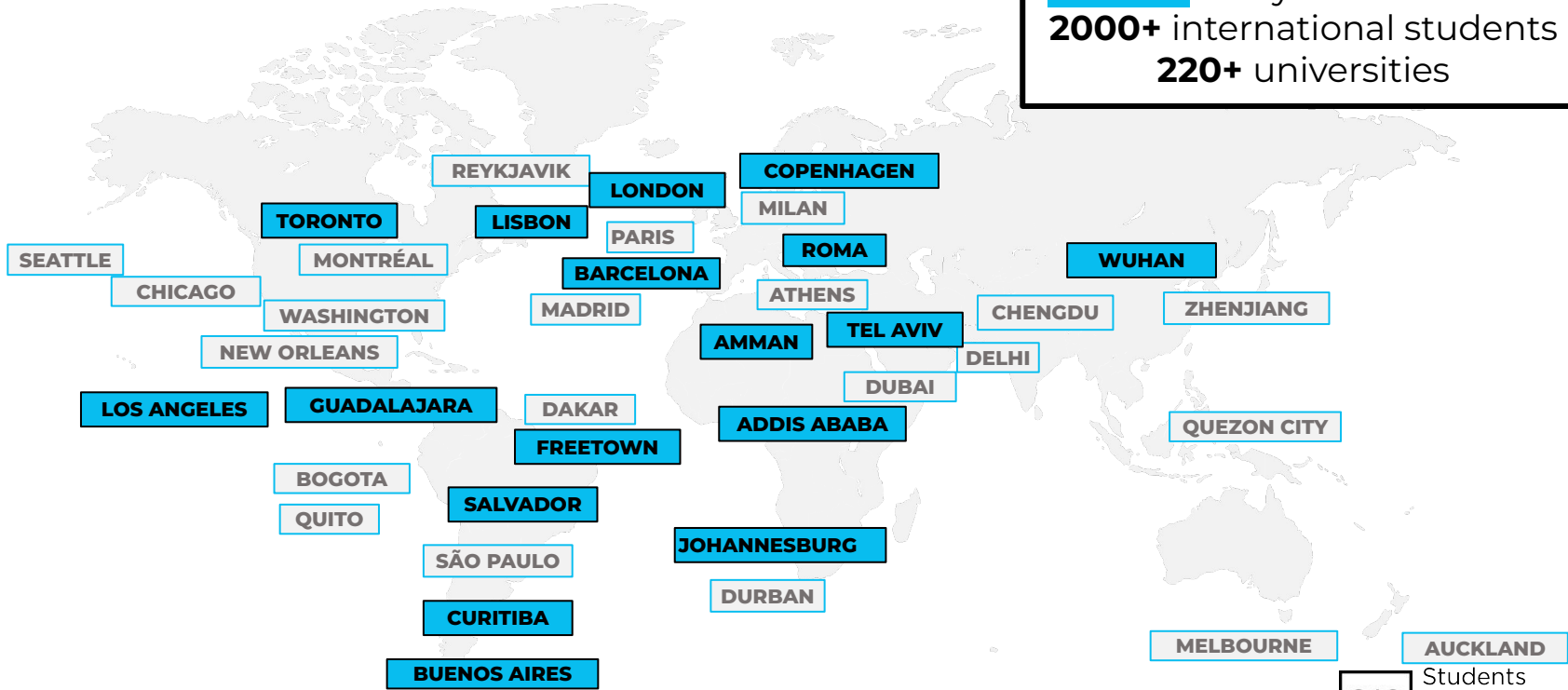
Who can apply?

- **University students** of any age & discipline (*registered in 2023/24 academic year*).
- **Young people** (18-28).
- **Local** and **international** participants.
- Mixed & **multidisciplinary** teams highly encouraged.
- No maximum number of team members.



A growing global movement

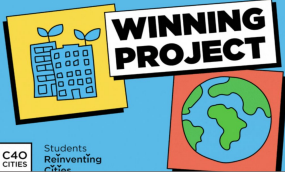
3 editions
17 cities this year & 39 in total
2000+ international students
220+ universities



C40
CITIES
Students
Reinventing
Cities

Global success of the competition

A global competition for students to share their vision for green & thriving neighbourhoods

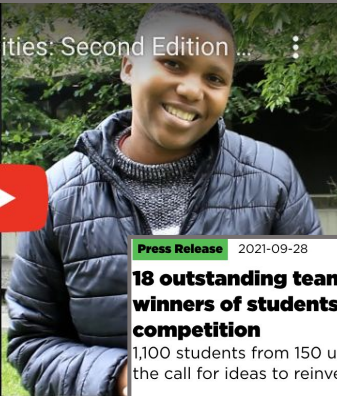


WORLD ARCHITECTURE NEWS

Students Reinventing Cities: C40 Cities competition to combat climate change

Teams of university students will share their vision for transforming 18 city neighbourhoods to deliver a green and just recovery from the COVID-19 crisis

TEDx Students Reinventing Cities

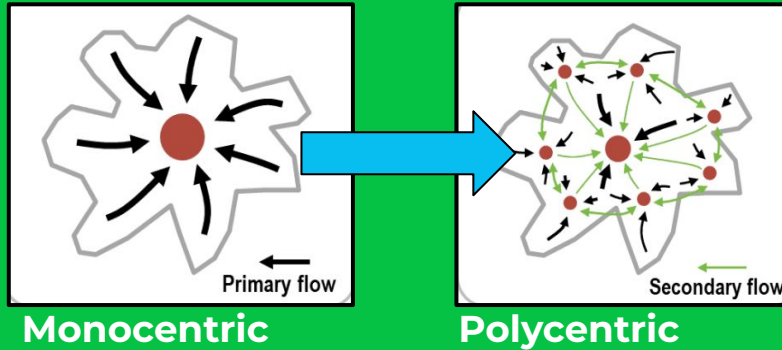


Press Release 2021-09-28

18 outstanding teams announced as winners of students reinventing cities competition

1,100 students from 150 universities respond to the call for ideas to reinvent parts of their cities.

The Proximity Approach



Mix of people and a wide range of housing choices.

Mix of uses with integrated local amenities and services.

Public spaces that are designed around the needs of the people.

15 minute City
Paris, Milan, Rome

15-minute Community Life Circle
Chengdu

Superblock
Barcelona

20-minute Neighbourhood
Melbourne

Complete Neighbourhood
Portland

Wellbeing City
Buenos Aires

Vital Neighbourhood
Bogota

Liveable Neighbourhood
Glasgow

And many more...



Students
Reinventing
Cities

Competition Framework

Designing **Green & Thriving Neighbourhoods**, a **cross-sectoral** & **holistic** design approach that maximises **environmental & social benefits**.

Advocating the **proximity model** - a model of **polycentric city** made of multiple **complete neighbourhoods**.



Green economy



Complete neighbourhood



People-centred streets & mobility



Sustainable living



Green spaces & climate resilience



Circular resources



Green energy & buildings



Clean construction



Connected places



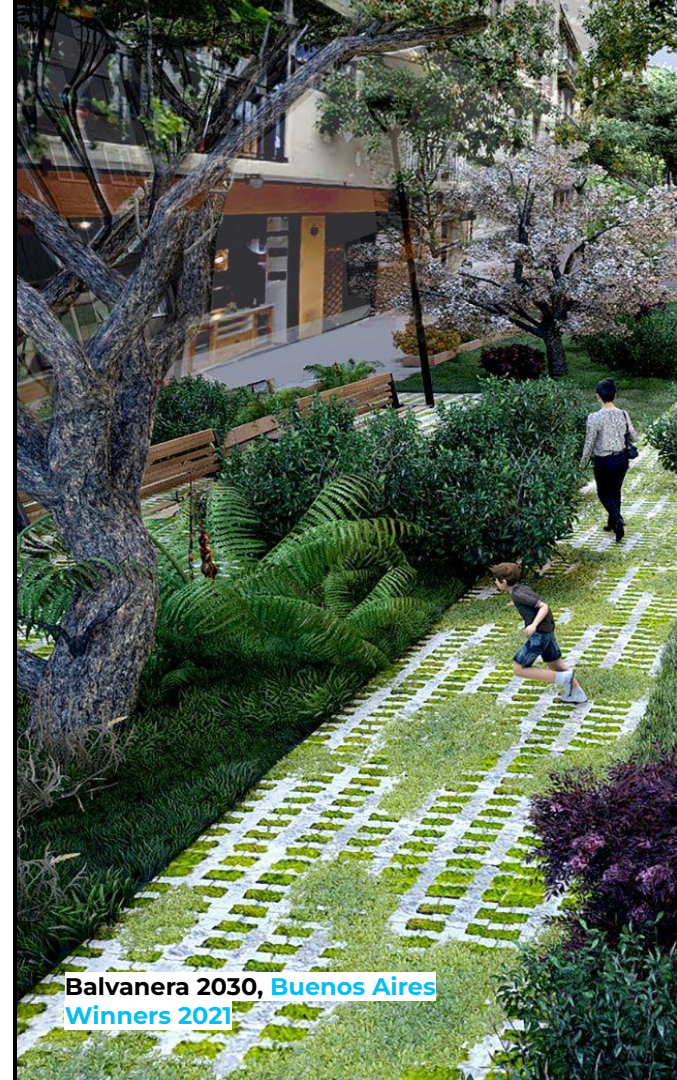
A place for everyone

GREEN
Pathway to near-zero emissions

THRIVING
Resilient & people-centred place

Develop proposals to reimagine an urban area considering:

City Priorities	Align with city's Climate Action Plan & redevelopment expectations
Green & Thriving Solutions	Solutions to reduce emissions & improve quality of life
Quality of Team	Design approach , variety of expertise, work with stakeholders & additional research
Feasibility	Consider cost, technicality, & timeline



What's required in your proposal

Description of
the team

Explain how
team worked
together

Use template

**Updated Team
Form**

Design concept

Environmental
assessment

Analysis of
benefits

10 pages

Project Proposal

1 digital
illustration
board

3 high-res
images/
drawings

**Graphic
Presentation**

Budget,
timeframes &
challenges

Compliance with
local regulations

Stakeholders &
responsibilities

3 pages

**Implementation
Plan**

Winning teams awards

Official certificate signed by the Mayor & Executive Director of C40

Receive coverage in local & global **communication campaigns**

Present work & connect with city officials & leading sectors



C40
CITIES

Eco-Barrio 7 de Agosto, Bogota winning team

- › HOME
- › SITES IN COMPETITION 2023/24
- › APPLICATION GUIDELINES
- › FAQ
- › PREVIOUS WINNING PROJECTS
- › MANIFESTO

Students Reinventing Cities

2023/24 competition now live

Common documents

Documentation

[ENG] STUDENTS REINVENTING CITIES_TEAM FORM (PHASE 1)

[ENG] STUDENTS REINVENTING CITIES - REGULATIONS

[ENG] GUIDANCE TO DESIGN A GREEN AND THRIVING NEIGHBOURHOOD

For each site: Site Form, Dataroom & Question Box

Documentation

STUDENTS REINVENTING CITIES - SITE FORM

Dataroom Access

Download specific documents for this site

OPEN DATAROOM

Questions?

If you have a question or would like more details on the site and the Students Reinventing Cities competition, please use the form below. You will receive a response via email.

First name *

Last name *

E-mail *

Competition Timeline

Exceptions for London
& Buenos Aires

Competition Launch

Info about all sites & cities live on the website. Team Registration open.

November 2023

5 April 2024

Teams Registration Deadline

Students form teams and register online.

Project Submission Deadline

Teams submit a completed proposal.

20 June 2024

Selection of winning projects

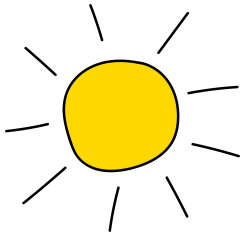
City, C40 and local experts form a jury to select the winning team.

July 2024

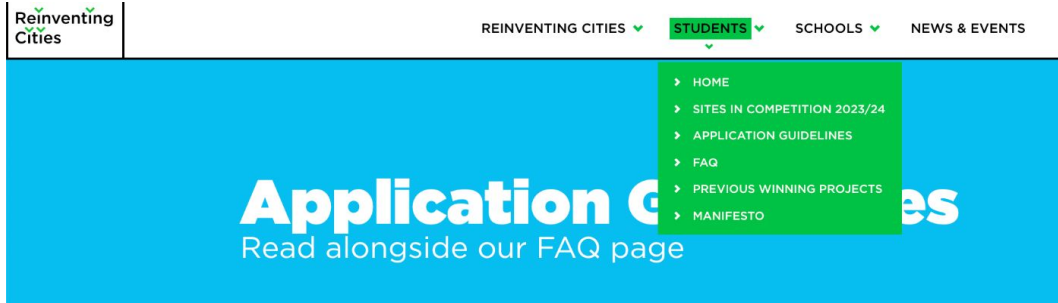
Announcement of winners

Prizes and media coverage.

September 2024



Register your team



5 April 2024

Download and fill out the team form

► Vale do Pinhão/Pinhão Valley
Curitiba, Brazil



REGISTER YOUR TEAM ►

Registration closes on Friday 5 April 5PM UTC

Upload the form via the registration portal



**A Green & Just future is
the future we want.**



**Join the Students
Reinventing Cities Network**

c40reinventingcities.org

C40
CITIES

Students
Reinventing
Cities

Students Reinventing Cities

Curitiba

Friday 15 March
11:30AM UTC via Zoom



CURITIBA



Students Reinventing Cities

Curitiba

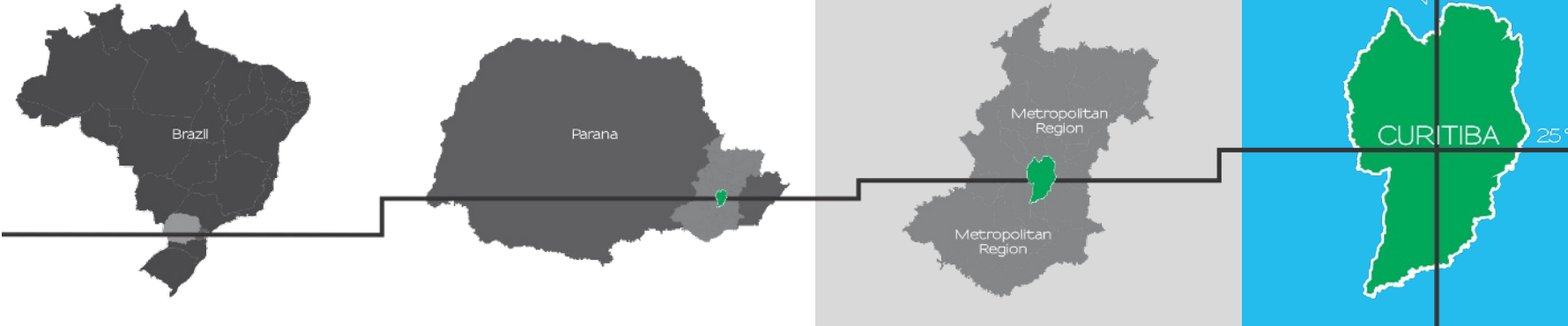


Vale do Pinhão



Students Reinventing Cities

Curitiba



METROPOLITAN REGION

29 cities

Area: 15.602 km²

Population: 3.224.286 (2010)
3.761.144 (2021)*

CURITIBA

Area: 435 km²

Population: 1.751.907 (2010)
1.967.291 (2021)*

*Estimation: IPPUC Database -
2021

Reinvent **Vale do Pinhão**

Agache Plan 1943

- Radial structure
- Functional sectors
- Avenues Plan

ZM - Military Zone

ZA - Administrative Zone

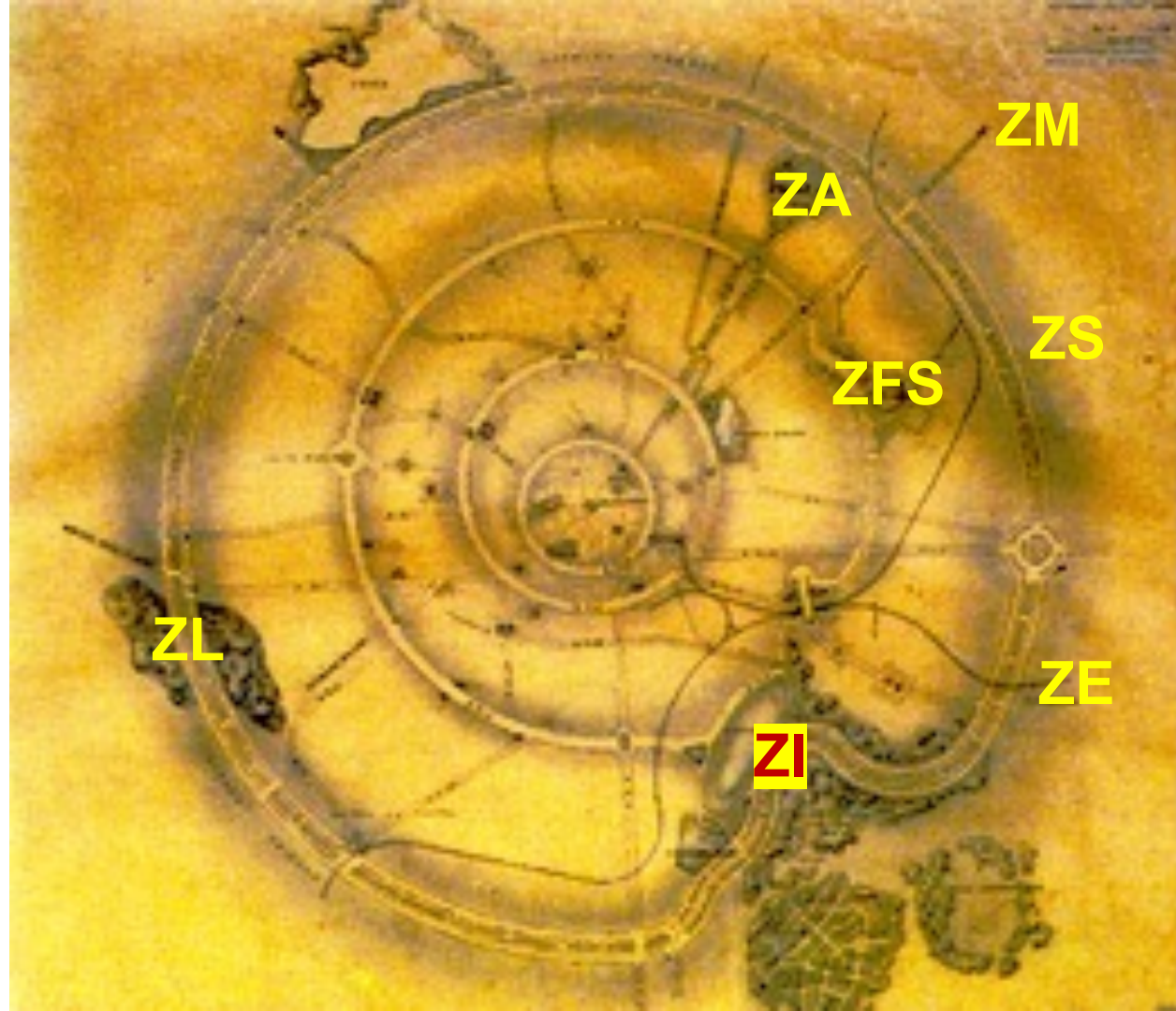
ZS - Sports Zone

ZFS - Food Supply Zone

ZI - Industrial Zone

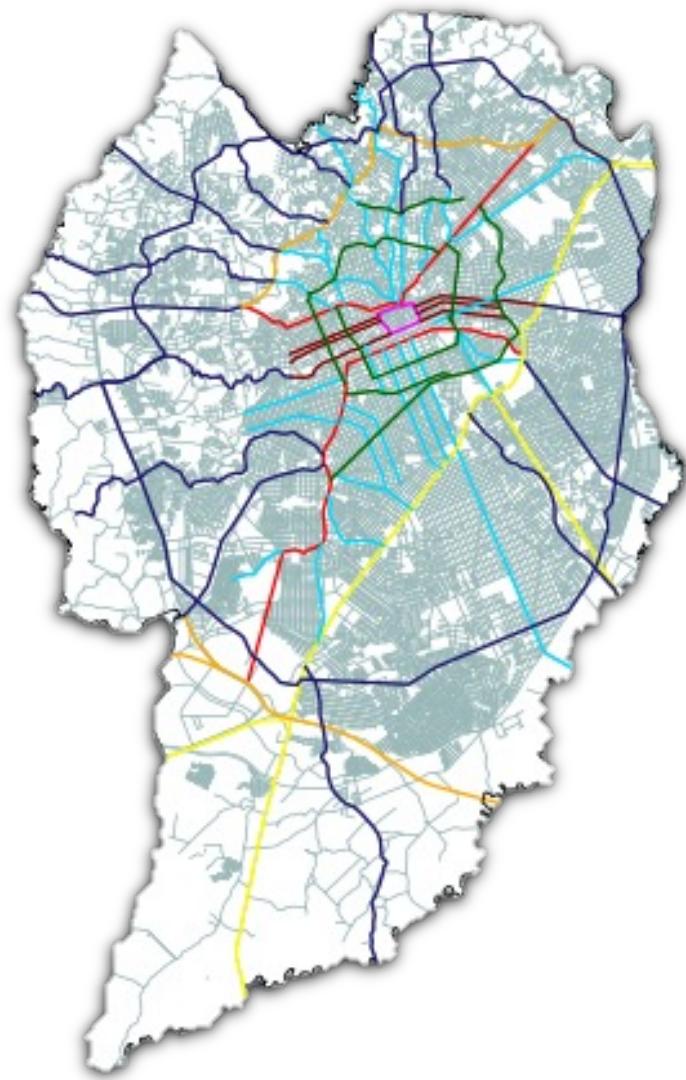
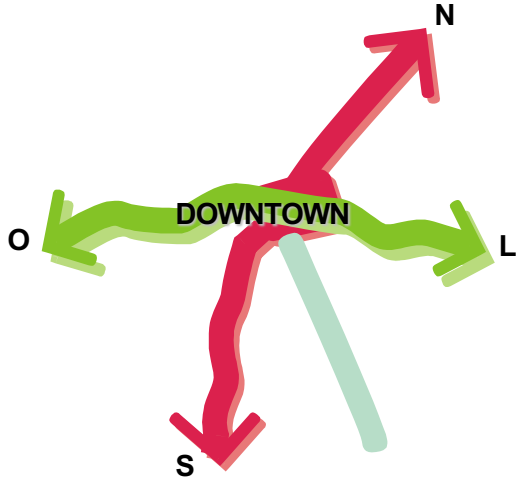
ZL - Leisure Zone

ZE - Educational Zone



Master Plan 1965/66

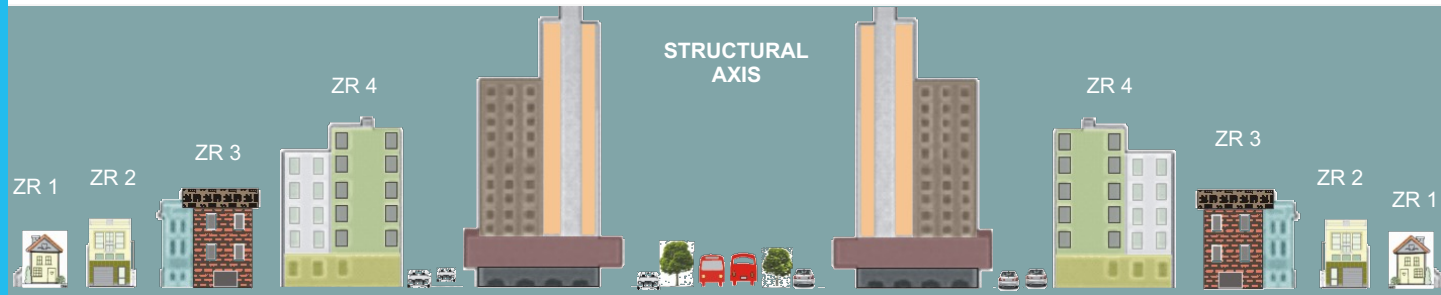
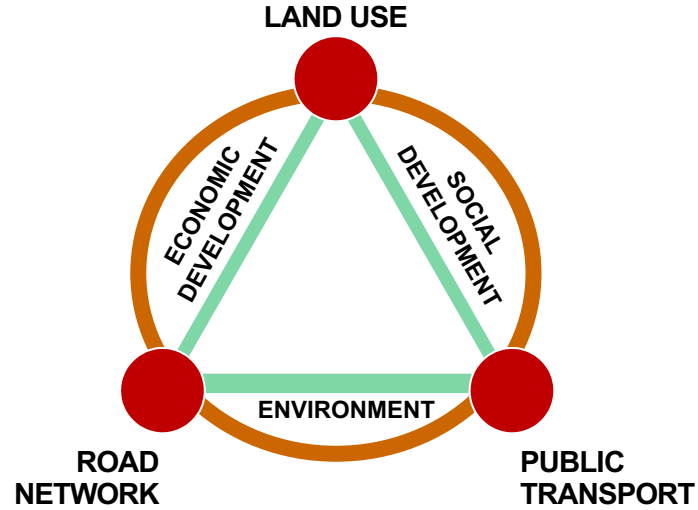
- Public competition
- Cia Serete + Jorge Wilhelm
- Linear Structure
- Creation of IPPUC



Urban Planning Process

Linear structure
development axis

Integration among
land use, public transport
and road network





Structural Axis Consolidation

Public transport

BRT – Bus Rapid Transit



World Smart City Awards 2023

Curitiba is elected the smartest city in the world

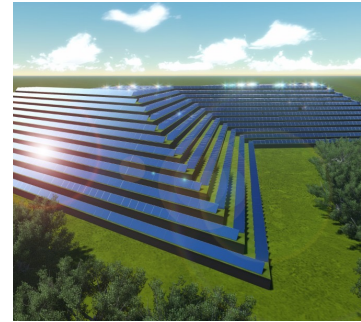
“Year after year, we have shown how Curitiba differentiates itself from other cities, being a pioneer in smart city services that stimulate innovative thinking, promoting improvements in the lives of Curitiba residents, with sustainable development and reinforcing that innovation is only valuable when it becomes a Social process.”

Rafael Greca – Curitiba’s Mayor

World Smart City Awards 2023

Curitiba is elected the smartest city in the world

The has implemented solutions to maintain the construction of a more sustainable and innovative city, aligned with the Sustainable Development Goals of United Nations (UN)



Bairro Novo do Caximba

Electromobility

PlanClima

Plan for mitigation and adaptation to climate change

HEALTH

Food Security

Solar Pyramid

**FREE
WIFI**

Educational
City

**Lighthouse of
Knowledge
and Innovation**

APP Digital Revolution

Vale do Pinhão

Movement that Integrates Curitiba's Innovation Ecosystem

Incentives to start-ups, creative economy, innovation and technology, Worktiba and Fab Lab



VALE DO
PINHÃO

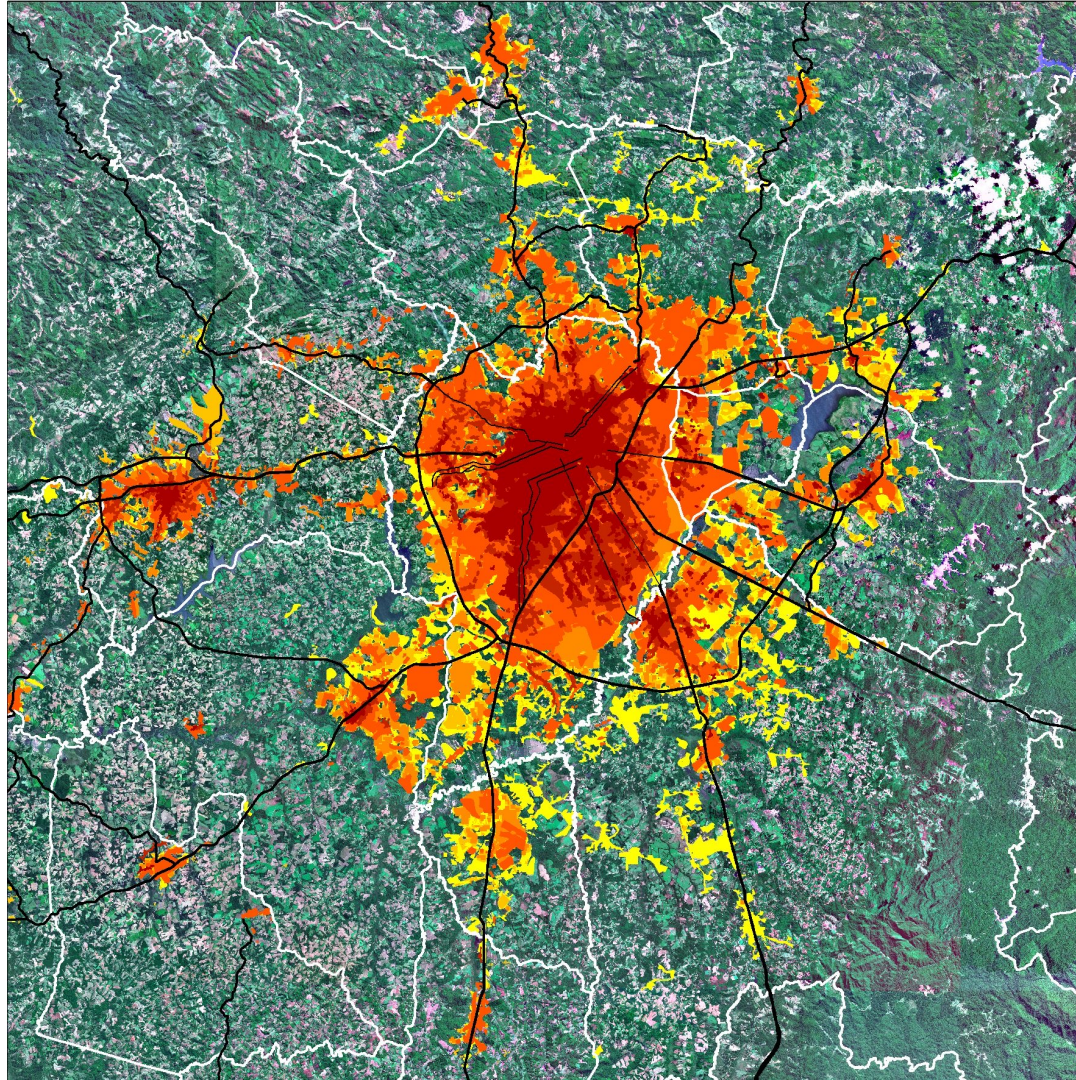


O Vale do Pinhão é valiosa oportunidade para Curitiba
gerar empregos e renda pela inovação

Felipe de Melo de Faria



Curitiba 2017
ano 324



POPULATION GROWTH RATE

CURITIBA

70/80.....5.34%

80/91.....2.29%

91/00.....2.11%

00/10.....0.99%

CURITIBA + RMC

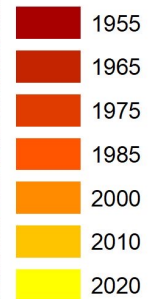
70/80.....5.33%

80/91.....2.89%

91/00.....3.09%

00/10.....1.37%

URBAN EVOLUTION



Vale do Pinhão

The train and the Landscape



Eufrásio Correia Square, in 1915

with the train station standing out in the background| Júlia Wanderley Collection / DPC/FCC Collection

Vale do Pinhão

The train and the Landscape

João Negrão Street

under the black bridge, towards the neighborhood. 1910s.

Helena Scherer Collection / DPC/FCC Collection



Vale do Pinhão

The train and the Landscape



Getúlio Vargas Avenue, in March 1949

In the foreground, João Negrão Street; on the left, the Leão Júnior factory, extending beyond Piquiri Street; On the right, Cervejaria Brahma.

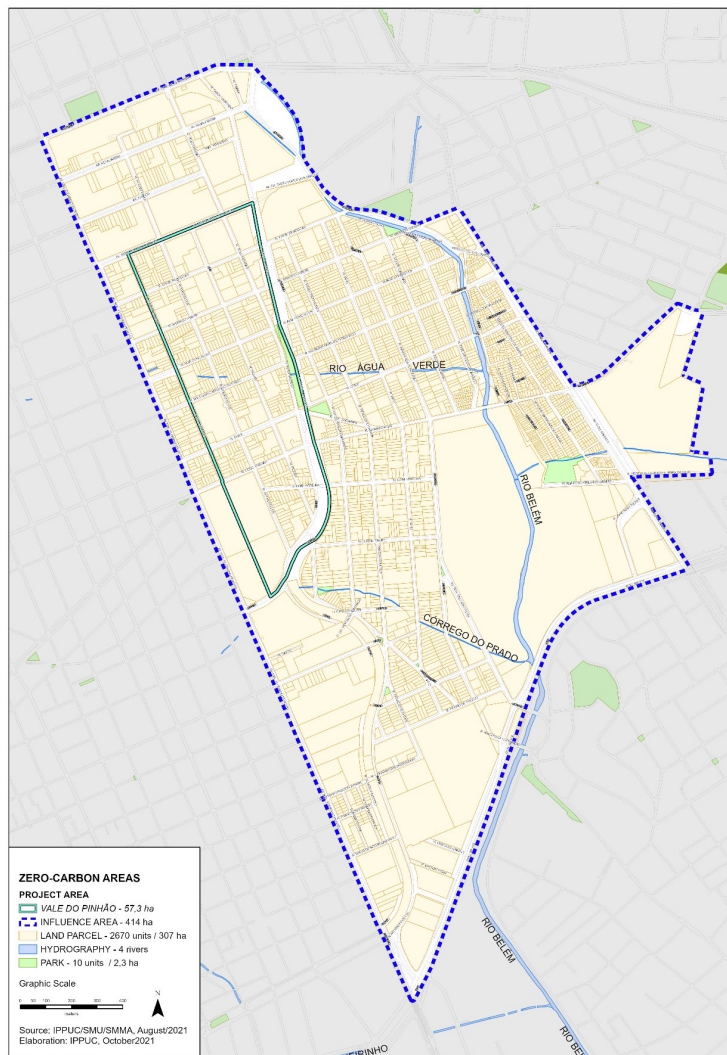
Arthur Wischral Collection / DPC/FCC Collection

Vale do Pinhão

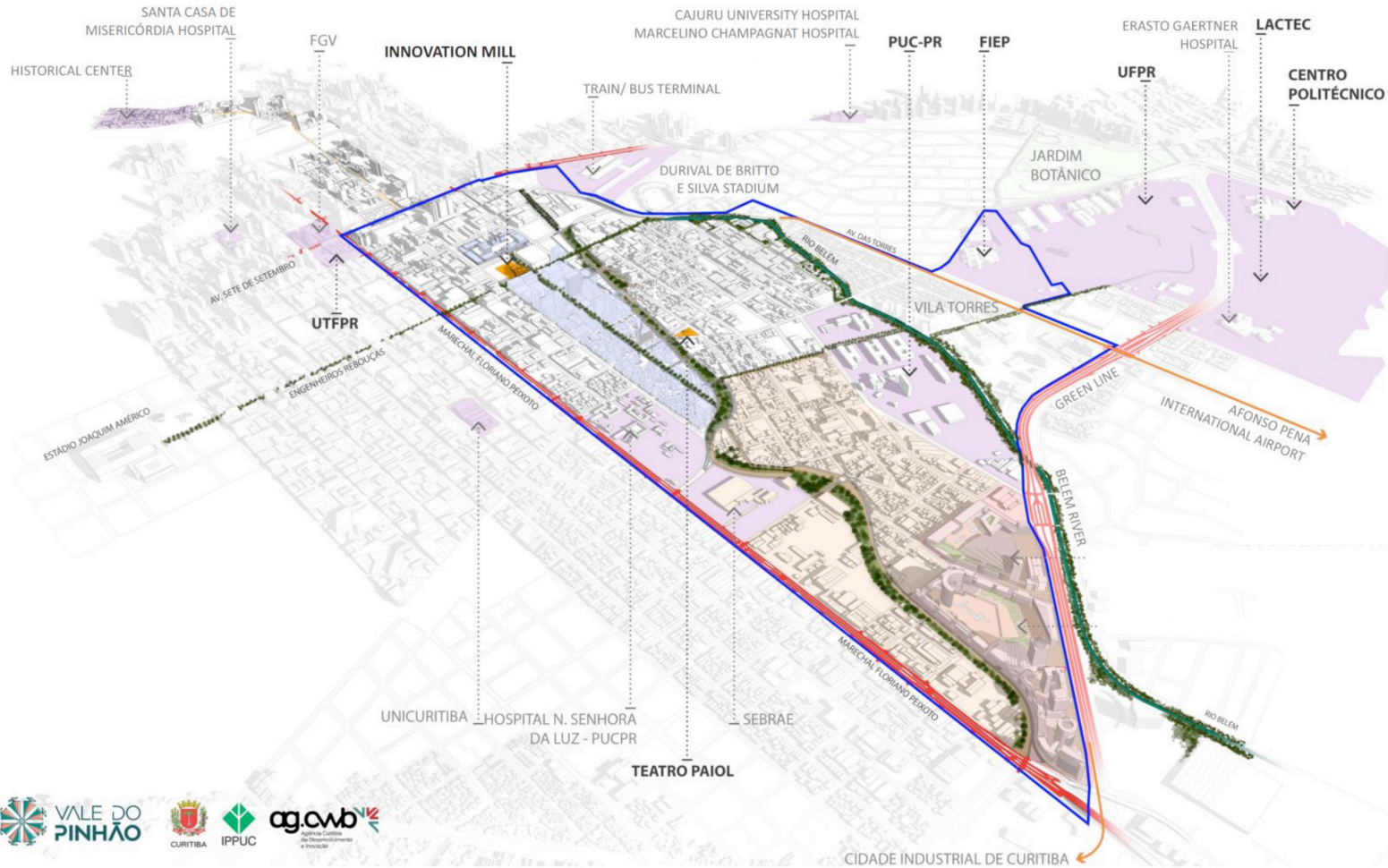
Location of Vale do Pinhão and its Influence Area

Environmental Potential

Still within the area of influence of Vale do Pinhão there are **Belém River, Água Verde River, Córrego do Prado** and the **Linear Park** along **Conselheiro Laurindo street** and **João Negrão street**, which has relevant environmental potential in boosting and expanding sustainability, ensuring more inclusive environments, safe and resilient;

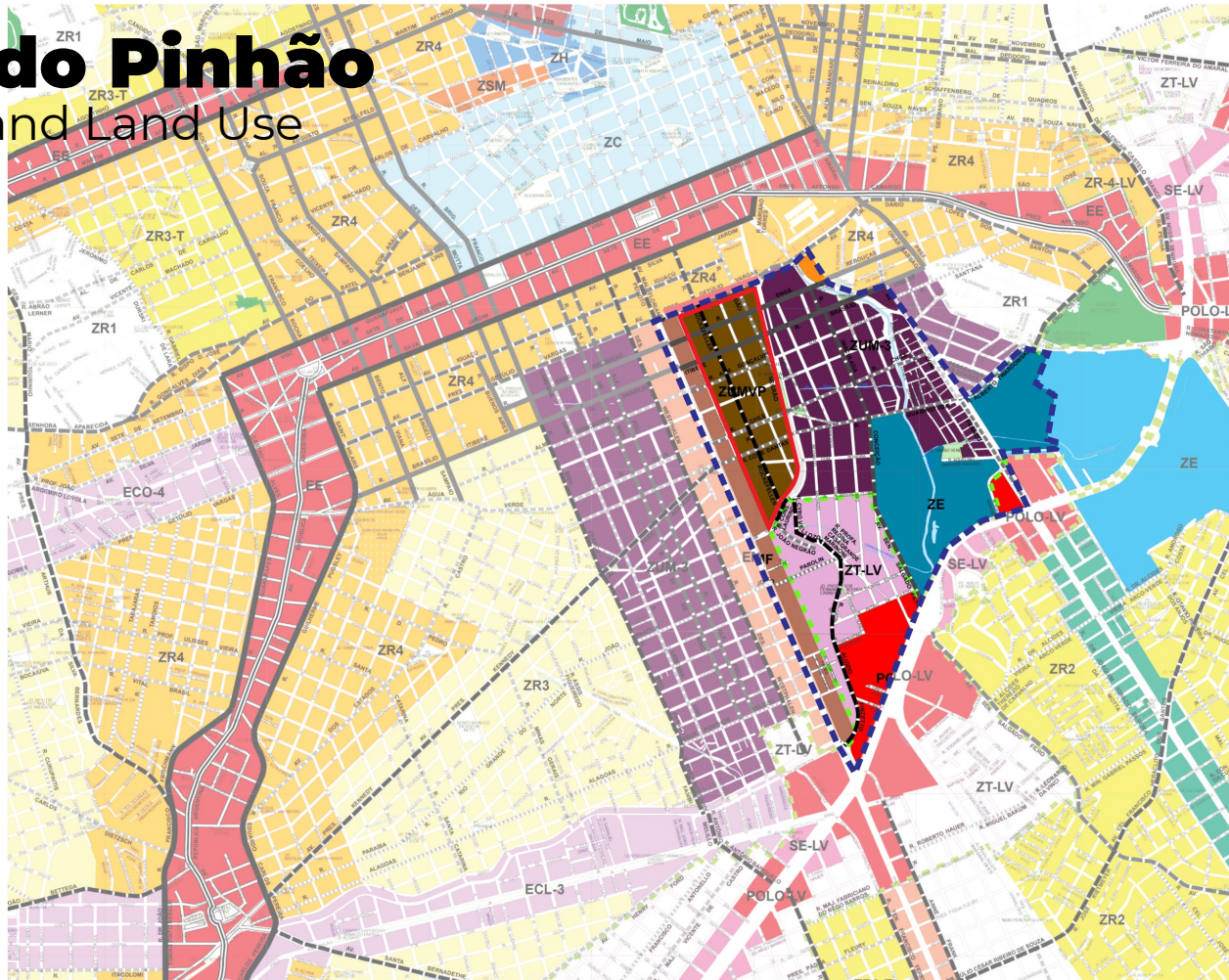


Vale do Pinhão



Vale do Pinhão

Zoning and Land Use



- LEGENDA**
- ZONEAMENTO**
- EXIOS ESTRUTURANTES**
- ENC EIXO NOVA CURITIBA
 - EMF EIXO MARECHAL FLORIANO
 - EAC EIXO PRES. AFFONSO CAMARGO
- EXIOS DE ADENSAMENTO**
- EACF EIXO DE ADENSAMENTO COMENDADOR FRANCO
 - EACB EIXO DE ADENSAMENTO ENGENHEIRO COSTA BARR
- EXIOS CONECTORES**
- ECO EIXO CONECTOR OESTE
 - ECL EIXO CONECTOR LESTE
 - ECS EIXO CONECTOR SUL
- ZONAS E SETOR**
- ZC ZONA CENTRAL
 - ZR1 ZONA RESIDENCIAL 1
 - ZR2 ZONA RESIDENCIAL 2
 - ZR3 ZONA RESIDENCIAL 3
 - ZR3-T ZONA RESIDENCIAL 3 - TRANSIÇÃO
 - ZR4 ZONA RESIDENCIAL 4
 - SEHS SETOR ESPECIAL DE HABITAÇÃO DE INTERESSE SO
 - ZROC ZONA RESIDENCIAL DE OCUPAÇÃO CONTROLADA
 - ZROI ZONA RESIDENCIAL DE OCUPAÇÃO INTEGRADA
 - ZUM-1 ZONA DE USO MISTO 1
 - ZUM-2 ZONA DE USO MISTO 2
 - ZUM-3 ZONA DE USO MISTO 3
 - ZUMVP ZONA DE USO MISTO VALE DO PINHAO**
 - ZSM ZONA SALDANHA MARRINHO
 - ZSF ZONA SÃO FRANCISCO
 - ZE ZONA EDUCACIONAL
 - ZM ZONA MILITAR
 - ZPS ZONA POLO DE SOFTWARE
 - ZH ZONA HISTORICA
 - ZCC ZONA CENTRO CIVICO
 - ZCSF ZONA COMERCIAL SANTA FELICIDADE
 - ZCUM ZONA COMERCIAL UNIBARRA
 - ZS-1 ZONA DE SERVIÇOS 1
 - ZS-2 ZONA DE SERVIÇOS 2
 - ZI ZONA INDUSTRIAL
- EIXO METROPOLITANO LINHA VERDE**
- PO-LV POLO DA LINHA VERDE
 - SE-LV SETOR ESPECIAL DA LINHA VERDE
 - ZT-LV ZONA DE TRANSIÇÃO DA LINHA VERDE
 - ZR-4-LV ZONA RESIDENCIAL 4 - LINHA VERDE
 - ZE-4-LV ZONA ESPECIAL DESPORTIVA - LINHA VERDE
 - ZS-2-LV ZONA DE SERVIÇOS 2 - LINHA VERDE
 - ZI-LV ZONA INDUSTRIAL - LINHA VERDE
- OUTRAS ZONAS E SETORES**
- PARQUES E BOSQUES
- ÁREA DE PROTEÇÃO AMBIENTAL**
- APA-PASSAÚNA APA DO PASSAÚNA
 - APA-IGUAÇU APA DO IGUAÇU
- SISTEMA VIÁRIO**
- SISTEMA VIÁRIO ESTRUTURAL**
- CENTRAL
 - EXTERNA
 - OUTRAS VIAS
- SISTEMA VIÁRIO BÁSICO**
- PRIORITÁRIA
 - SETORIAL 1
 - SETORIAL 2
 - COLETORA 1
 - COLETORA 2
- DELIMITAÇÃO EIXO METROPOLITANO-LV**
- DELIMITAÇÃO EIXO METROPOLITANO-LV
- CONVENÇÕES**
- ARRUAMENTO
 - PRAÇAS E JARDINETES
 - PARQUES E BOSQUES
 - CEMITÉRIOS
 - FERROVIAS
 - LINHAS DE TRANSMISSÃO
 - HIDROGRAFIA - RIOS
 - HIDROGRAFIA - LAGOS E REPRESAS
 - HIDROGRAFIA - CAVAS E VARZEAS
 - DIVISA DE MUNICÍPIO
 - INFLUÊNCIA ÁREA VALE DO PINHAO







SEGLINE
3051-9000

05







Students Reinventing Cities

Curitiba

Vale do Pinhão

Daniela Tahira Munhoz da Rocha

Arquiteta – IPPUC
dtahira@ippuc.org.br

Daniele Moraes

Arquiteta – IPPUC
damoraes@ippuc.org.br

Tel.: +55 41 3250-1414

