

Students Reinventing Cities

Toronto

Share your vision to
transform urban spaces
into green & thriving
neighbourhoods.



Webinar Agenda

1. Welcome & Introduction (5')

Natalie Kaiser | Stakeholder Engagement & Special Projects Chief Planner's Office, City Planning, City of Toronto

2. Competition Framework (20')

Ellie White | Reinventing Cities Project Officer, C40 Cities

3. Site Presentation (20')

Andus Chen | Transportation Planner, City Planning, City of Toronto

Vanessa Opassinis | Community Planner, City Planning, City of Toronto

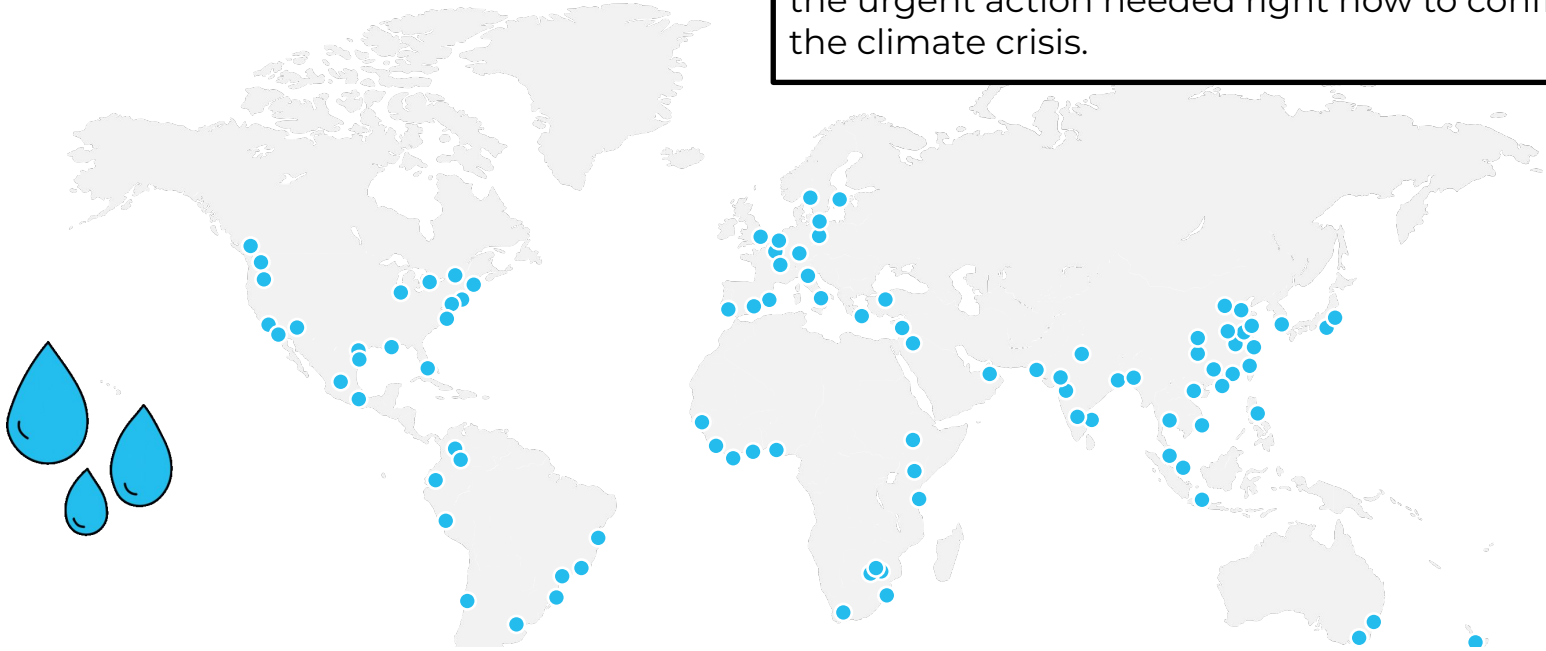
4. Q&A (15')



Students
Reinventing
Cities

C40 Cities

C40 is a network of mayors of **nearly 100 world-leading cities** collaborating to deliver the urgent action needed right now to confront the climate crisis.



Directly representing just under **600 million** residents.
Making up more than **20%** of the global economy.

Why do cities matter?

Cities occupy
2%
of the world's
landmass

Cities consume
around
75%
of the world's
energy

Cities
create over
70%
of energy-related
greenhouse gas
emissions

Cities
generate over
80%
of the
world's GDP

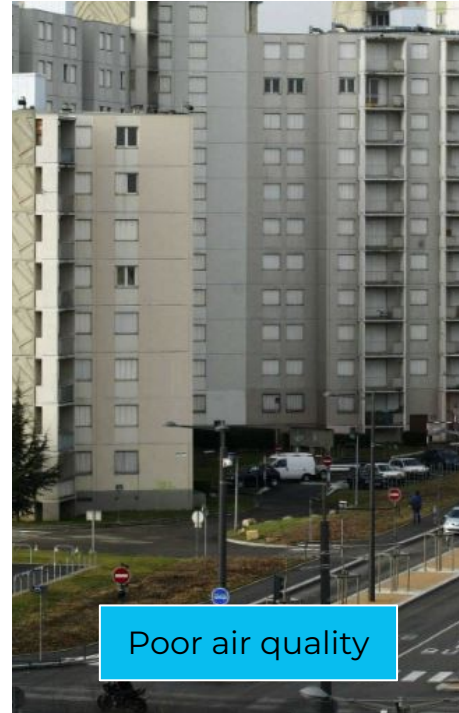
The urban model of the 20th Century led to the development of car-oriented public spaces, specialisation of neighbourhoods and urban sprawl. **Cities are seeking new design models to transform urban life.**



Poor quality of life



Long commutes



Poor air quality



Lack of facilities



Integrated spatial planning for more compact and efficient urban growth, through **proximity, mixed use & Transit-Oriented Development**, could **reduce greenhouse gas emissions by 23-26% by 2050.**

IPCC, April 2022

What is Students Reinventing Cities?

An international **competition** that celebrates innovative proposals that **reduce emissions and improve quality of life**.

For **university students** (all ages & disciplines) & **youth (18-28)** to form multi-disciplinary teams and **collaborate with cities**.

To reimagine urban spaces into **green & thriving neighbourhoods**, aligning with **city priorities**.



How does it work?



Cities identify sites they would like to transform & revitalize



C40 organises the international competition



Youth form teams and submit their best proposals to regenerate the urban areas

8



Students
Reinventing
Cities

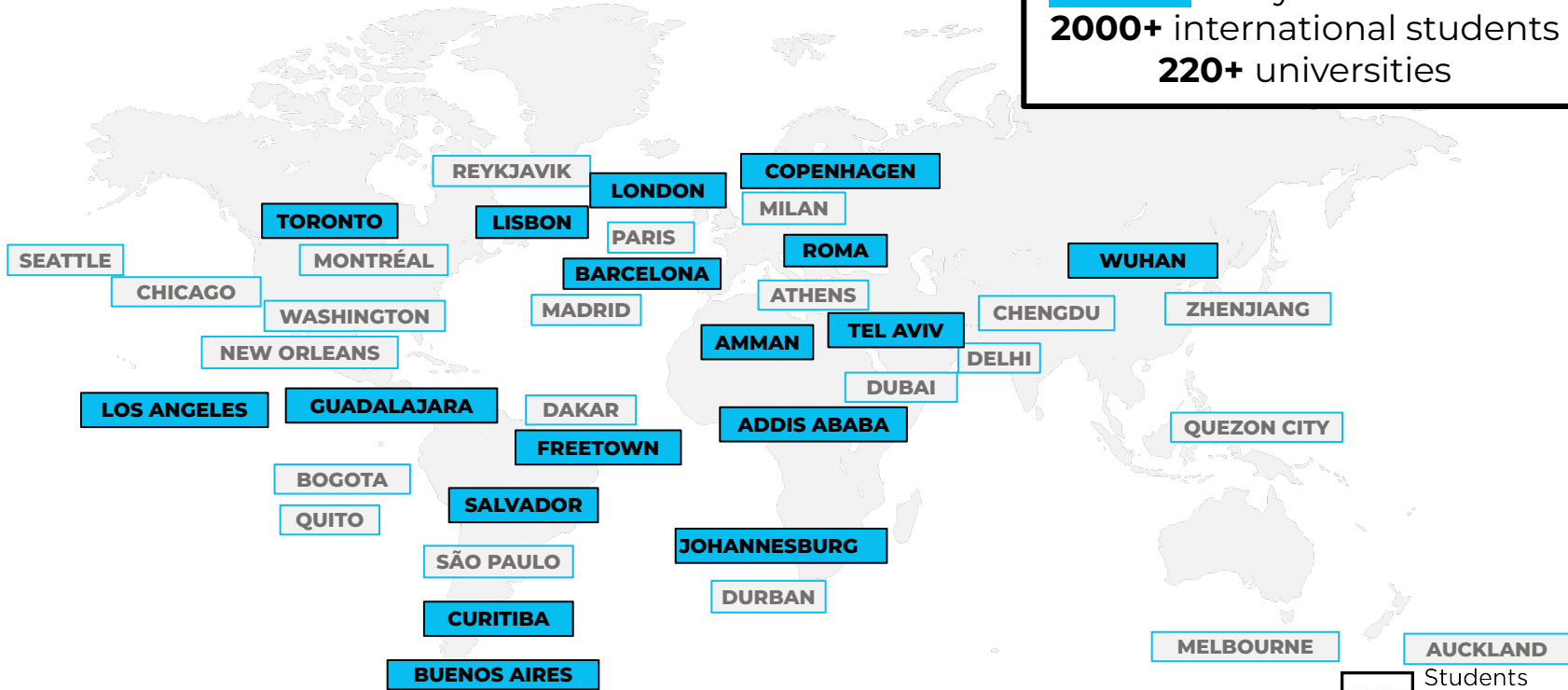
Who can apply?

- **University students** of any age & discipline (*registered in 2023/24 academic year*).
- **Young people** (18-28).
- **Local** and **international** participants.
- Mixed & **multidisciplinary** teams highly encouraged.
- No maximum number of team members.



A growing global movement

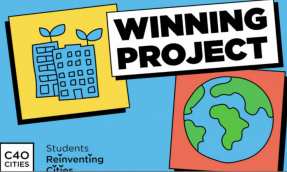
3 editions
17 cities this year & 39 in total
2000+ international students
220+ universities



C40
CITIES
Students
Reinventing
Cities

Global success of the competition

A global competition for students to share their vision for green & thriving neighbourhoods



WORLD ARCHITECTURE NEWS

Students Reinventing Cities: C40 Cities competition to combat climate change

Teams of university students will share their vision for transforming 18 city neighbourhoods to deliver a green and just recovery from the COVID-19 crisis

TEDx Students Reinventing Cities



Press Release 2021-09-28

18 outstanding teams announced as winners of students reinventing cities competition

1,100 students from 150 universities respond to the call for ideas to reinvent parts of their cities.

Competition Framework

Designing **Green & Thriving Neighbourhoods**, a **cross-sectoral** & **holistic** design approach that maximises **environmental & social benefits**.

Advocating the **proximity model** - a model of **polycentric city** made of multiple **complete neighbourhoods**.



Green economy



Complete neighbourhood



People-centred streets & mobility



Sustainable living



Green spaces & climate resilience



Circular resources



Green energy & buildings



Clean construction



Connected places

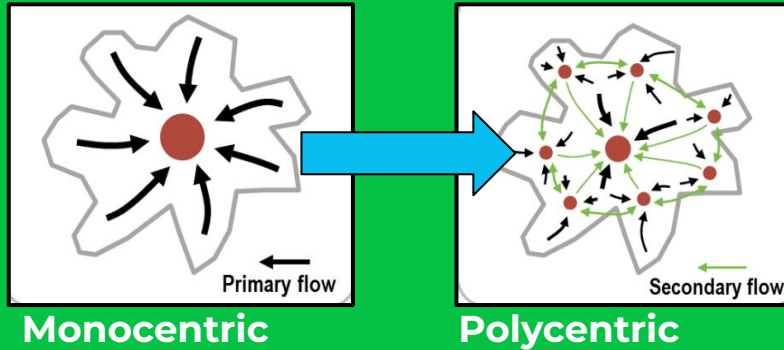


A place for everyone

GREEN
Pathway to near-zero emissions

THRIVING
Resilient & people-centred place

The Proximity Approach



Mix of people and a wide range of housing choices.

Mix of uses with integrated local amenities and services.

Public spaces that are designed around the needs of the people.

15 minute City
Paris, Milan, Rome

15-minute Community Life Circle
Chengdu

Superblock
Barcelona

20-minute Neighbourhood
Melbourne

Complete Neighbourhood
Portland

Wellbeing City
Buenos Aires

Vital Neighbourhood
Bogota

Liveable Neighbourhood
Glasgow

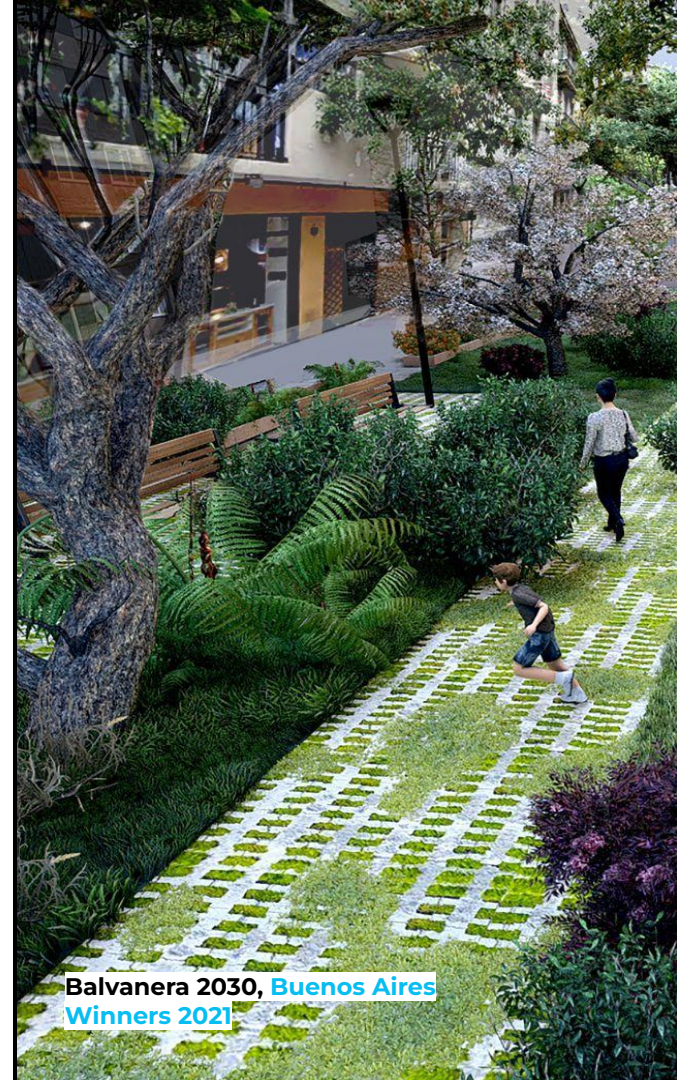
And many more...



Students
Reinventing
Cities

Develop proposals to reimagine an urban area considering:

City Priorities	Align with city's Climate Action Plan & redevelopment expectations
Green & Thriving Solutions	Solutions to reduce emissions & improve quality of life
Quality of Team	Design approach , variety of expertise, work with stakeholders & additional research
Feasibility	Consider cost, technicality, & timeline



What's required in your proposal

Description of
the team

Explain how
team worked
together

Use template

**Updated Team
Form**

Design concept

Environmental
assessment

Analysis of
benefits

10 pages

Project Proposal

1 digital
illustration
board

3 high-res
images/
drawings

**Graphic
Presentation**

Budget,
timeframes &
challenges

Compliance with
local regulations

Stakeholders &
responsibilities

3 pages

**Implementation
Plan**

Winning teams awards

Official certificate signed by the Mayor
& Executive Director of C40

Receive coverage in local & global
**communication campaigns, including
C40 official videos**

Present work & connect with city
officials & leading sectors

Receive **city-specific prizes**
(e.g implementation consideration,
internships, exhibitions)



Eco-Barrio 7 de Agosto, Bogota winning team

Competition Documentation

Regulations & Guidance
(Application Guidelines page)

Site Form + Dataroom
(Sites in competition page)

**C40
CITIES**

**Students
Reinventing
Cities**

Students Reinventing Cities

A global competition for universities and students to share their vision for green & thriving neighbourhoods.

Regulations for the Competition

Table of Contents

- Foreword
- Objectives
- Structure of the competition
- Calendar
- Team Composition
- The 10 Principles for a Green & Thriving Neighbourhood
- Submission
- Evaluation Criteria and Juries
- Awards

**C40
CITIES**

**Students
Reinventing
Cities**

Students Reinventing Cities

Guidance to Design a Green and Thriving Neighbourhood

Vasbyhave, Copenhagen

Jernbanetorvet, 55.658371, 12.551879

In Copenhagen, a former rail yard area is being transformed into a green and thriving neighbourhood with 9,000 residents and 4,000 jobs over the next 15 years. The area, Jernbanetorvet, is a world-leading example of how to promote health for people & planet through urban planning and design. The project takes an evidence-based approach to healthy neighbourhood development, focusing on urban interventions for diverse ages, incomes and backgrounds that promote health through easy access to healthy and affordable food, widely accessible invitation to physical activity, and social infrastructure to deepen social connections and support overall mental health.

One of the most powerful tools for public health intervention is green, public space. One of the integral green, public spaces in the first area to be developed is Vasbyhave – a one-hectare park

Figure 1 | Vasbyhave & its surroundings

Approx. size of area. The park itself is one hectare but is a part of the 9-hectare first phase of the development. The park connects to a two-hectare park, Lokomotivskoven, on the other side of a bridge that connects the North and South of the area.

Key information. The park is located within the first phase of the development, a mixed, community-oriented neighbourhood with diverse housing options and integrated education, play, work and healthy food options.

Priority areas & main expectation. Three specific priorities apply to the park, but overall, it is expected that the park be programmed in a way that the health of both people and the planet is prioritized.

The design should furthermore focus on diverse user groups, intergenerational meeting points, enhancing inclusivity. Additionally, it should boost climate resilience through adaptation measures and biodiversity while also taking its connection to the wider city into account.

**Students
Reinventing
Cities**

Documentation

**[ENG] STUDENTS REINVENTING CITIES
- COPENHAGEN SITE FORM**

Dataroom Access

Download specific documents for this site

OPEN DATAROOM

**C40
CITIES**

Visit www.c40reinventingcities.org/en/students/

- › HOME
- › SITES IN COMPETITION 2023/24
- › APPLICATION GUIDELINES
- › FAQ
- › PREVIOUS WINNING PROJECTS
- › MANIFESTO

Students Reinventing Cities

2023/24 competition now live

Common documents

Documentation

[ENG] STUDENTS REINVENTING CITIES_TEAM FORM (PHASE 1)

[ENG] STUDENTS REINVENTING CITIES - REGULATIONS

[ENG] GUIDANCE TO DESIGN A GREEN AND THRIVING NEIGHBOURHOOD

For each site: Site Form, Dataroom & Question Box

Documentation

STUDENTS REINVENTING CITIES - SITE FORM

Dataroom Access

Download specific documents for this site

OPEN DATAROOM

Questions?

If you have a question or would like more details on the site and the Students Reinventing Cities competition, please use the form below. You will receive a response via email.

First name *

Last name *

E-mail *

Competition Timeline

Exceptions for London
& Buenos Aires

Competition Launch

Info about all sites & cities live on the website. Team Registration open.

November 2023

21 March 2024

Teams Registration Deadline

Students form teams and register online.

Project Submission Deadline

Teams submit a completed proposal.

20 June 2024

July 2024

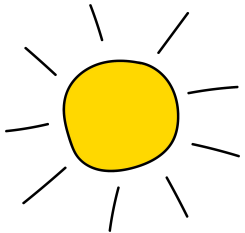
Selection of winning projects

City, C40 and local experts form a jury to select the winning team.

Announcement of winners

Prizes and media coverage.

September 2024



Register your team

ReInventing Cities

REINVENTING CITIES ▾ STUDENTS ▾ SCHOOLS ▾ NEWS & EVENTS ▾

Application Guidelines
Read alongside our FAQ page

Documentation

- [ENG] GUIDANCE TO DESIGN A GREEN AND THRIVING NEIGHBOURHOOD
- [ENG] STUDENTS REINVENTING CITIES - REGULATIONS (2023/24)
- [ENG] STUDENTS REINVENTING CITIES_TEAM FORM FOR REGISTRATION (PHASE 1)

21 March 2024

Download and fill out the team form

› **Vasbyhave**
Copenhagen, Denmark

REGISTER YOUR TEAM ›

Registration closes on Thursday 21 March 2024 - 5PM UTC

Upload the form via the registration portal





**A Green & Just future is
the future we want.**



**Join the Students
Reinventing Cities Network**

c40reinventingcities.org

C40
CITIES

Students
Reinventing
Cities

Thornccliffe Park

C40 Cities: City of Toronto Overview

Project Area Context

➤ History

- **Early 1800s** - Area was purchased by George Taylor
- **1888** - Thorncliffe Farms was created, which became one of the leading breeders of racehorses in Canada
- **1916** - Property bought by group of investors from Baltimore, Maryland
- **1917** - Thorncliffe's new owners opened a popular horse racetrack on site
- **1952** - Thorncliffe Park was purchased by Thorncliffe Park Ltd., which developed the existing high-rise neighbourhood in the late 1950s and early 1960s



Thorncliffe Racetrack



Thorncliffe Park Early 70's

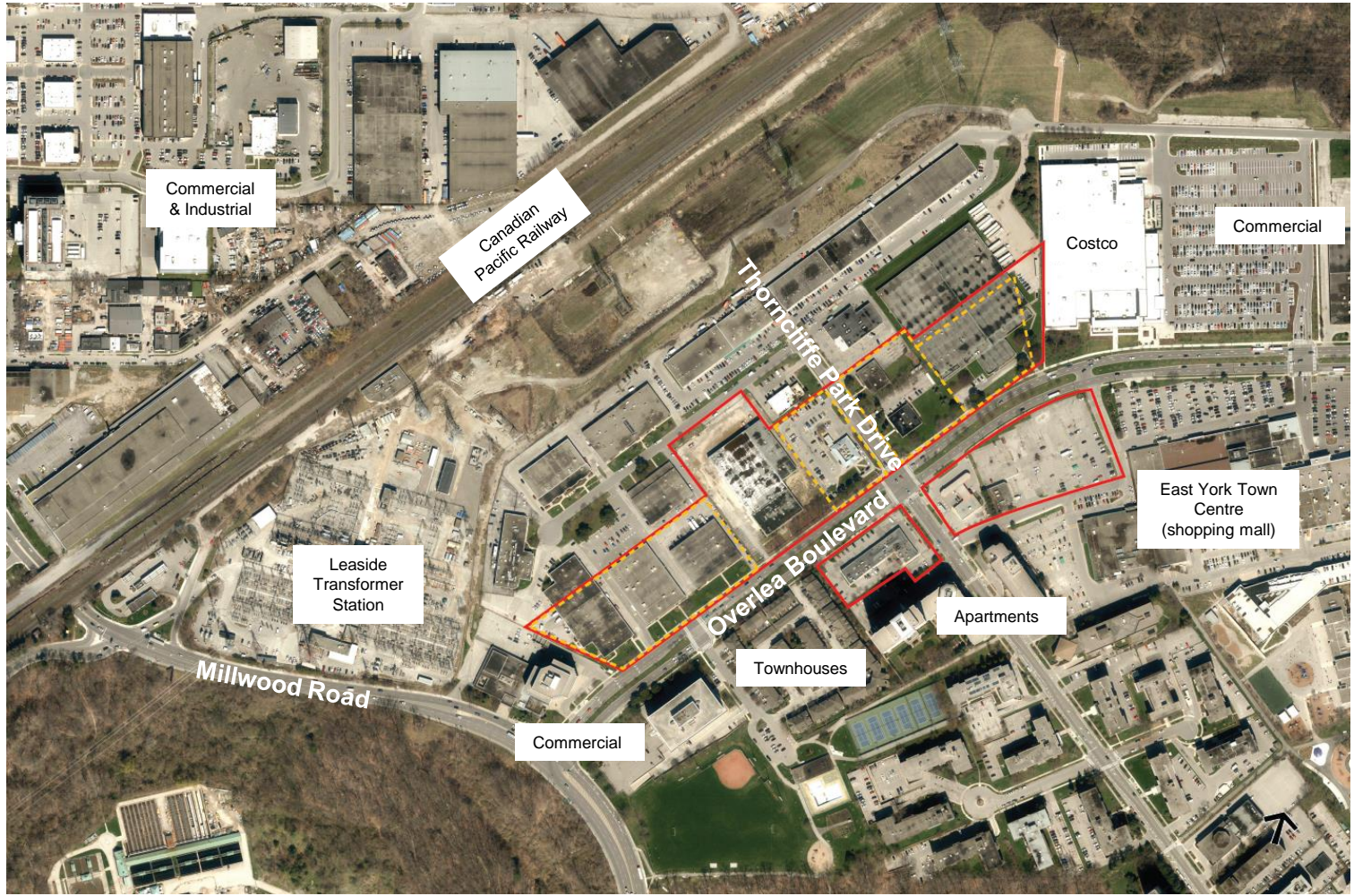
➤ Community Profile

- Multi-residential high-rise community
- Diverse arrival community
- Top languages spoken include Tagalog, Gujarati, Urdu, & Arabic
- Lower income than rest of City
- Younger demographic than rest of City
- Located in Neighbourhood Improvement Area



Community Monument

Project Area Context



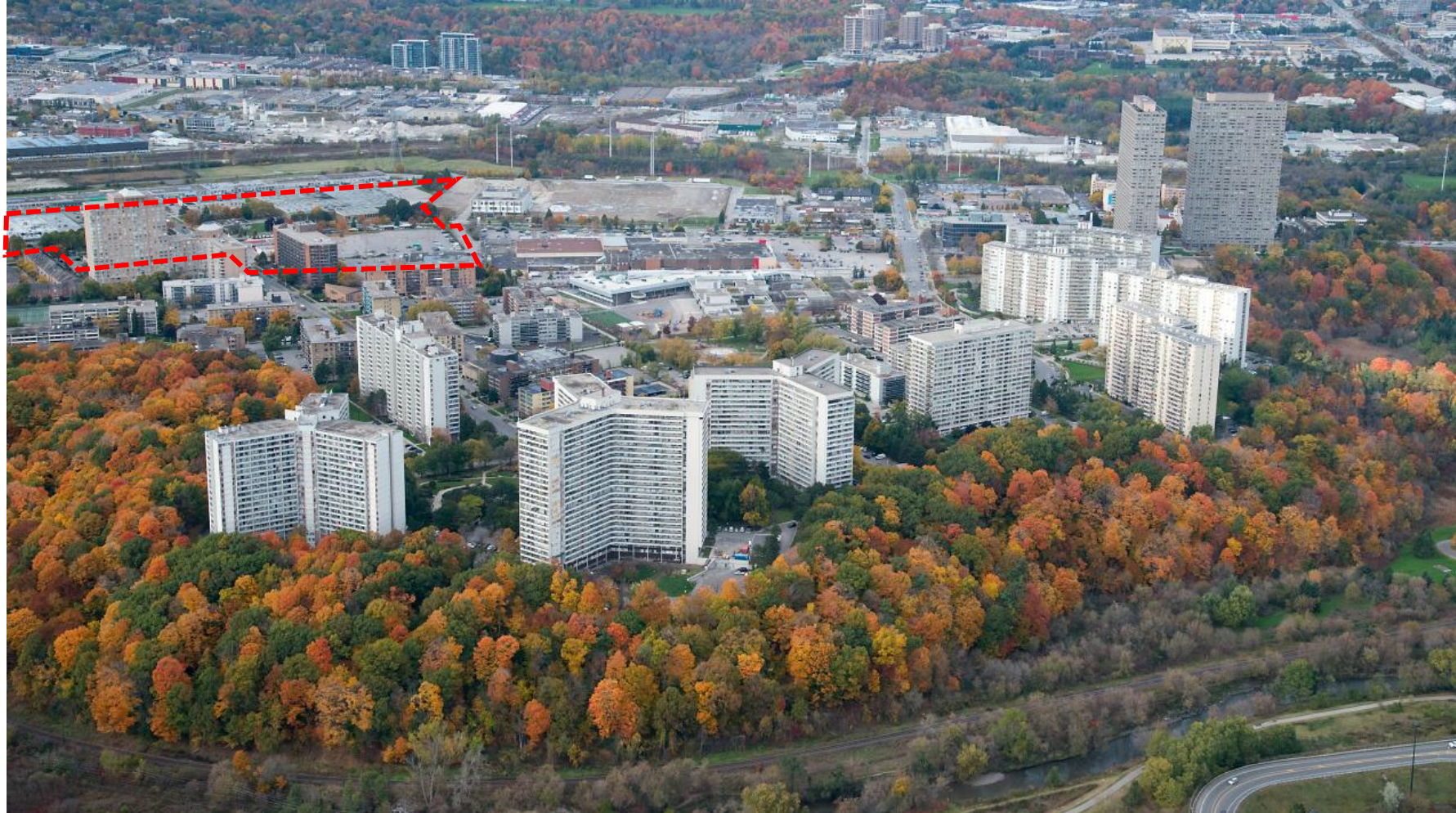
Northwest: Commercial uses, Canadian Pacific Railway

Northeast: Commercial & Retail Uses, Parking lots, & Mall

Southeast: Apartments, Townhouses & Commercial Uses

Southwest: Commercial and Leaside Transformer Station

➤ Surrounding Context



North View – Thorncliffe Park

➤ Surrounding Context



South View – Thorncliffe Park



East York Town Centre (Adjacent to Project Area)



Retail Plaza (Included in Project Area)



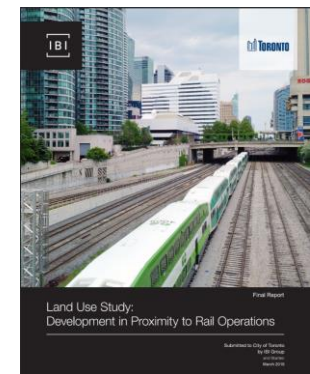
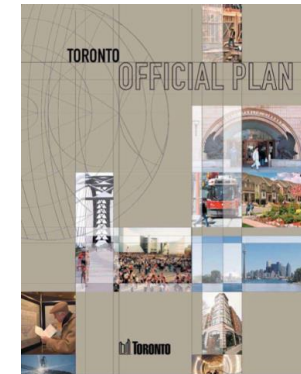
Thorncliffe Townhouses (Adjacent to Project Area)

➤ Planning Policy



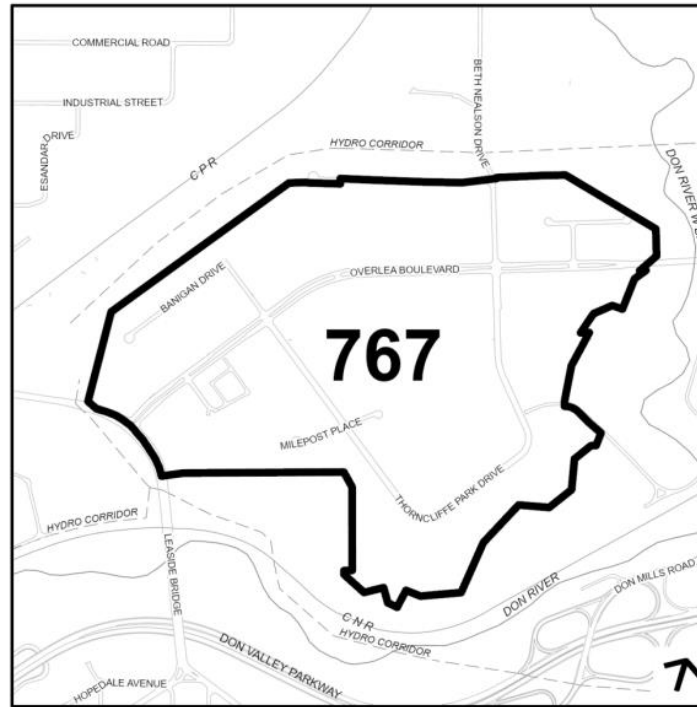
Toronto Official Plan – Map 20 Land Use Plan

- **Urban Structure:** (N) Employment Area
- **OP Designation:** (N) General Employment Area, (S) Mixed Use Area
- **Secondary Plan:** N/A
- **SASP:** 147 – 4 Thorncliffe Park Drive
- **MTSA:** 767 Thorncliffe Park Station (pending approval)
- **Guidelines:** Tall & Mid-Rise Buildings, Public Realm, Rail Adjacency



➤ Major Transit Station Area

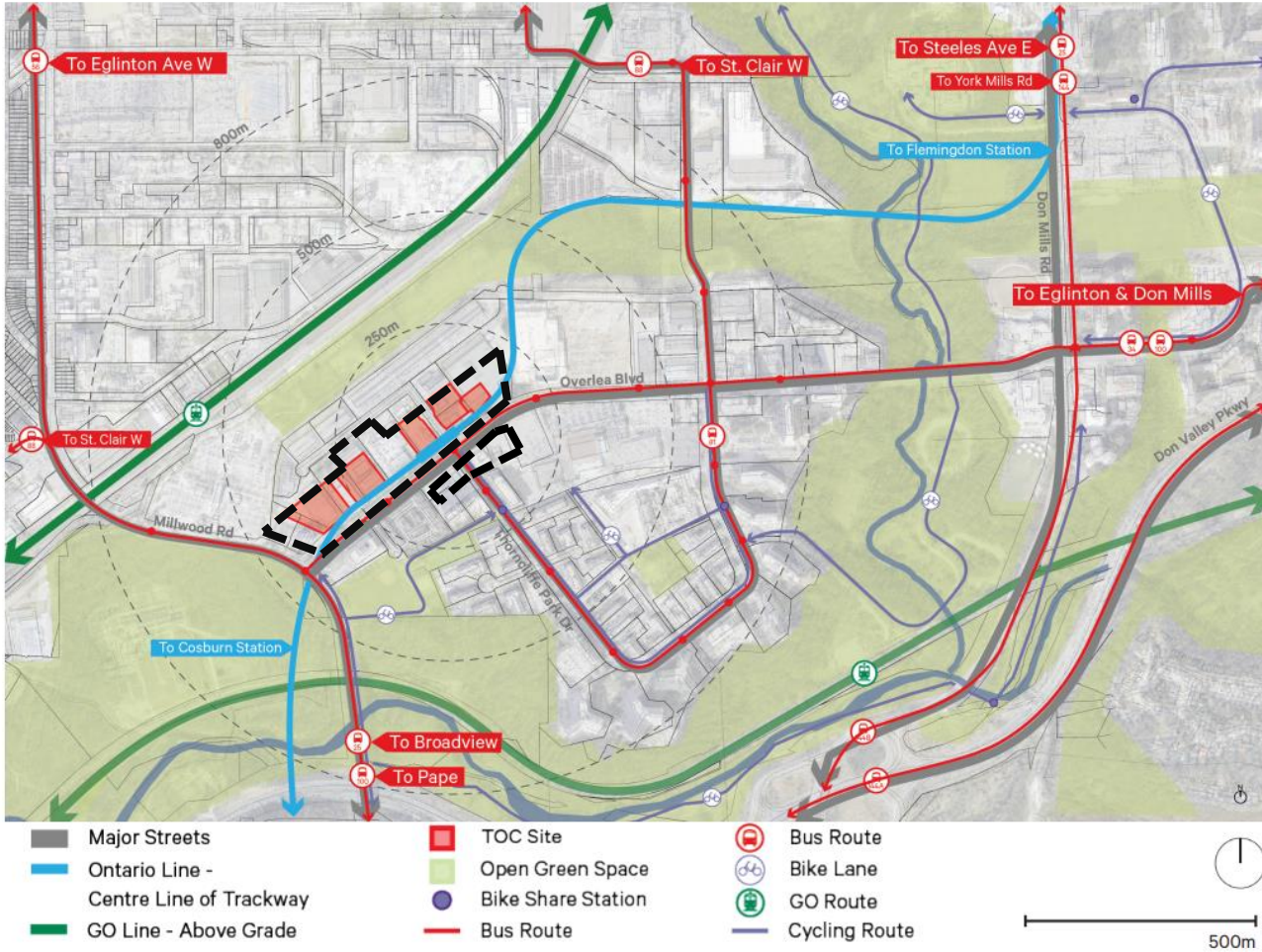
- **MTSA** are the areas generally within 500 to 800 metre radius of a transit station.
- **MTSA Area:** 89 ha
- **Minimum Density Target:** 200 people per ha
- **Planned Density:** 300 people and jobs per ha
- **Minister Approval:** Pending



OPA 575 – Thorncliffe Park Major Transit Station Area



➤ Transportation Context

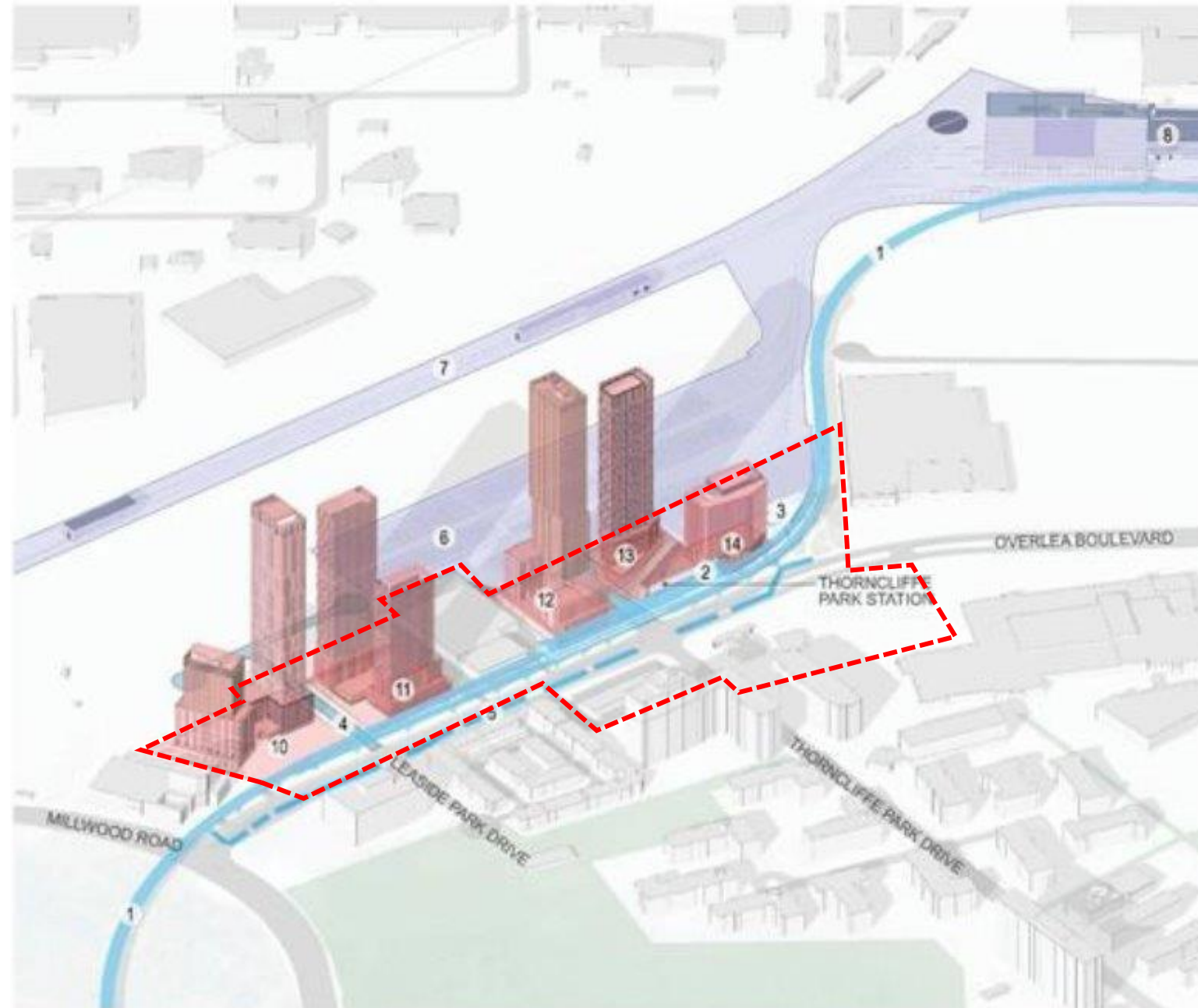


- 3 points of vehicular access to Thorncliffe Park
- 2 on-street bike lanes, one way direction and lacks connectivity to cycling network
- Several local bus routes with access to Don Mills Station, St. Clair Station, Pape Station and Broadview Station
- Extensive sidewalks throughout area
- Suburban street grid with streets that loop and dead end as well as reliance on private streets



Ontario Line: Thorncliffe Park Station & TOC

- Thorncliffe Park Station + Elevated Guideway
- Transit Oriented Communities Program
- Bus Loop north of Station
- Cycling Facilities
- Maintenance & Storage Facility
- Islamic Society of Toronto



Challenges, Opportunities & Project Approach



Key Challenges: Physical

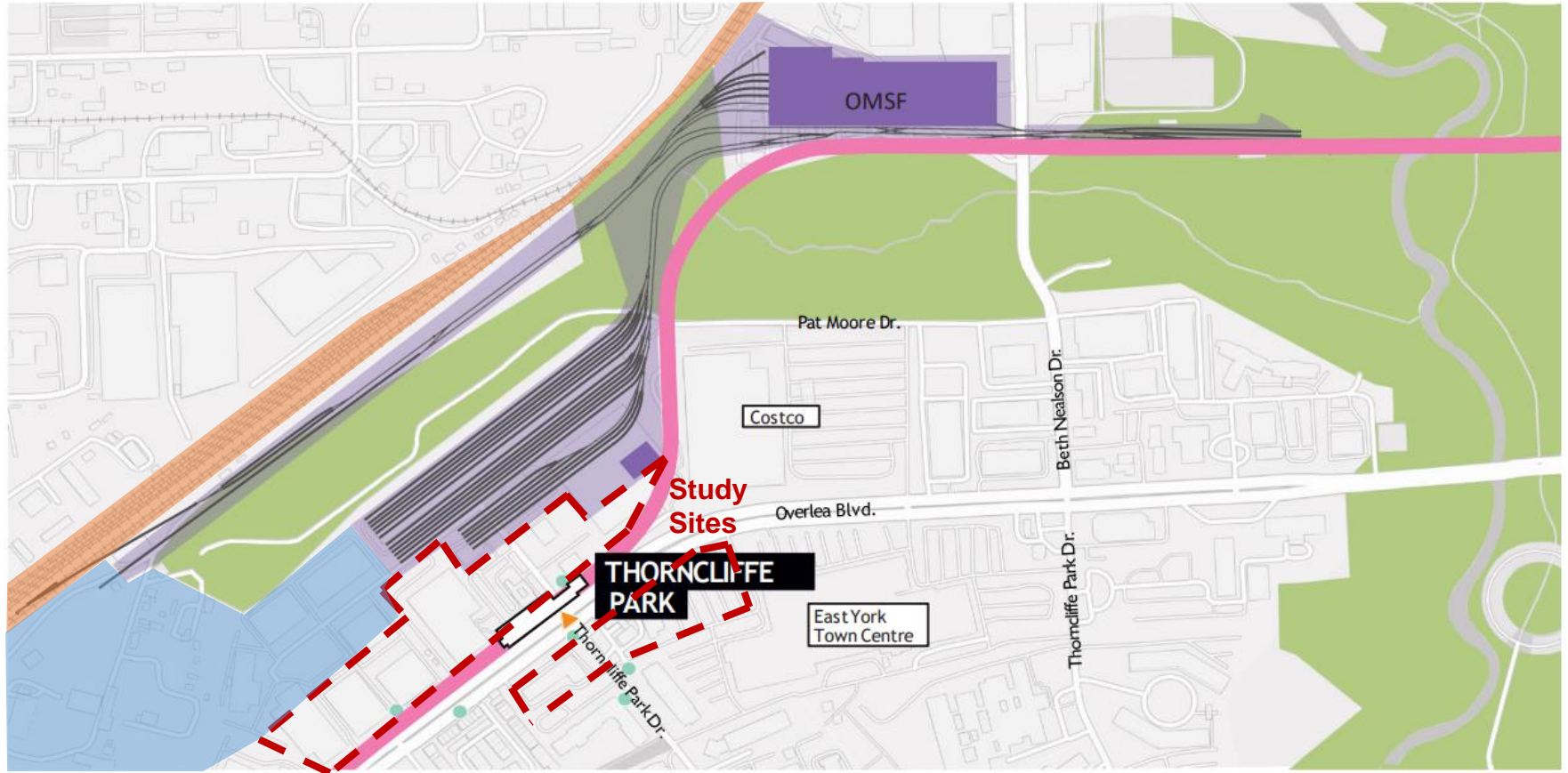
Canadian Pacific
Railway

Future Ontario Line
MSF

Future Ontario Line
Guideway

Existing & Future
Potential
Expansion of
Hydro Substation

Don Valley Ravine



- Elevated
- Station Building
- Maintenance and Storage Facility Boundary
- Bus Stop
- Station Entrance
- Maintenance and Storage Facility Building

Note: Locations of track storage and maintenance buildings are not final.

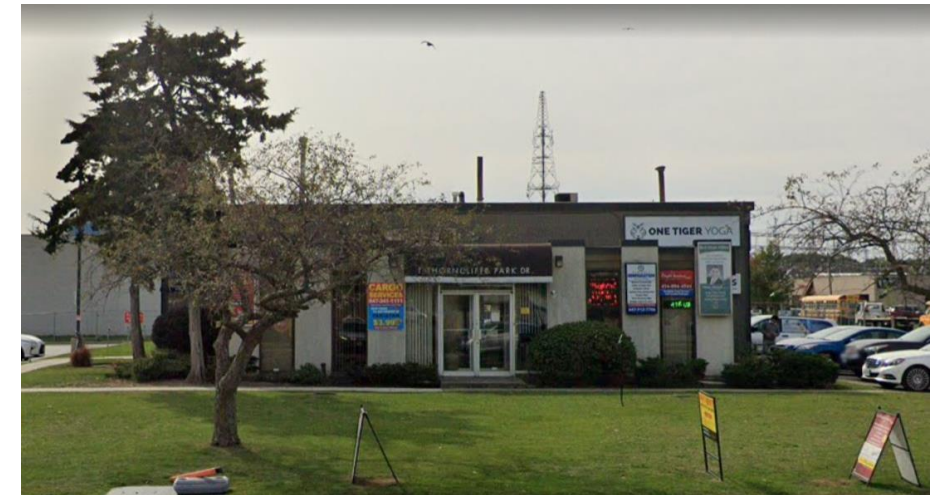


➤ Key Challenges: Community & Services

- Displacement of local businesses and services
- Maintaining affordability
- Lack of parkland and limited access to Don Valley Ravine
- Local schools and childcare facilities at capacity
- Limited community services and spaces



Local Grocery Store



Services Hub

➤ Key Opportunities

Community

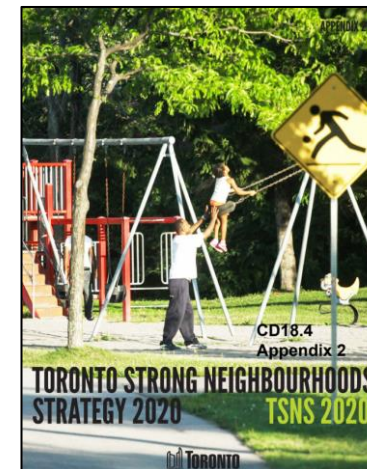
- Strong Multicultural and Grassroot Groups
- Reporting & Engagement on Community Needs

Physical

- Future Provincial Transit Oriented Community
- Large Soft Sites for Development
- Adjacency and Access to Don Valley Ravine
- Public Realm along/underneath the Elevated Guideway

Policy Direction

- C40 Green and Thriving Neighbourhoods
- Affordable Housing
- Inclusive Communities
- Climate Action



Transit-Oriented Communities



CBC Communities in Focus: Thorncliffe Park

Supporting Communities During Major Transit Infrastructure Projects

A Case Study of Thorncliffe Park in Toronto
DECEMBER 2023



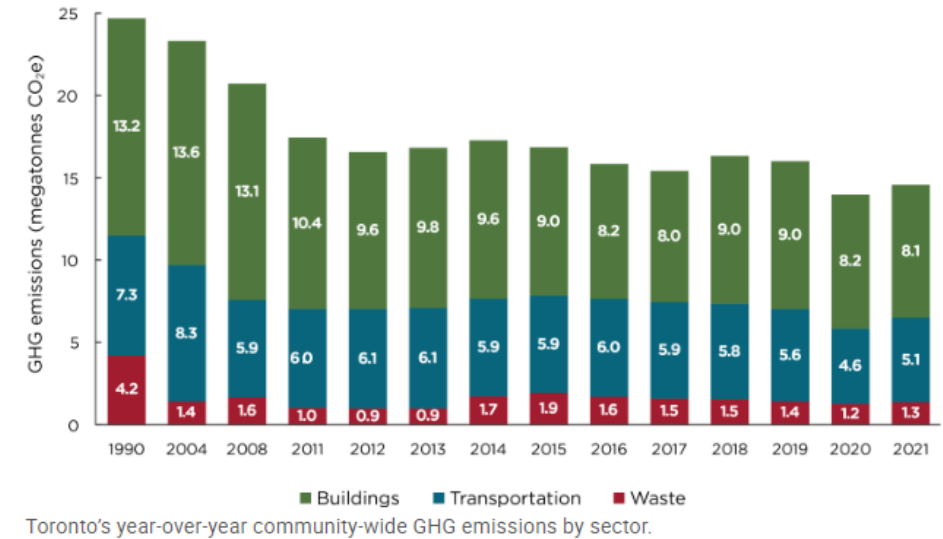
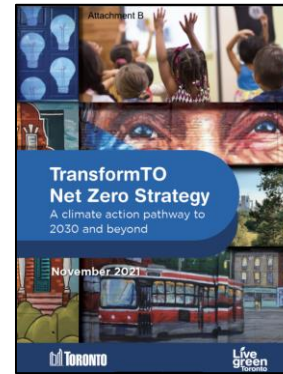


TransformTO Net Zero Strategy

- Net zero by 2040
- The following 2030 goals have been established:

New Homes/Buildings & Energy

- All designed/built to be near zero GHG emissions
 - Comply with Toronto Green Standards (TGS)
- 50% of community-wide energy to come from renewable or low-carbon sources
- 25% of commercial and industrial floor area to be connected to low carbon thermal energy sources



Transportation

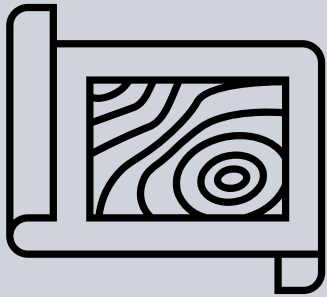
- 30% of registered vehicles in Toronto to be electric
- 75% of school/work trips under 5km to be walked, biked or by transit

Waste

- 70% residential waste diversion
- Identify pathways to more sustainable consumption

➤ Project Approach

Precinct Plan

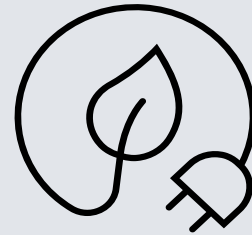


Land Use
Compatibility

Livability & Equity

Community
Engagement

Climate Resiliency



Green
Infrastructure

Low-Carbon

Low-Impact
Development

Built Form



Community
Connectivity

Economic
Development

Housing

➤ TOC Public Engagement

Virtual Open House: February 29th 6:30-8:00pm EST



In-Person Open House: March 7th 6:30-8:00pm EST

- [Cypriot Community Centre](#)
6 Thorncliffe Park Dr
Toronto ON M4H 1H1

Register Here:

<https://engageio.ca/en/register-thorncliffe-park-toc-open-houses>

Thank you! Questions?